

SyncMaster 173T/193T/170N/171N/172N/173N/174T 191N/192N/193N/191T plus/153T/150N/151N/152N



SyncMaster
Monitor



SAMSUNG DIGITell
everyone's invited











 [Main Page](#)

 [On-Screen Display](#)

 [Safety Instructions](#)

 [Troubleshooting](#)

-  [Notational](#)
-  [Power](#)
-  [Installation](#)
-  [Cleaning](#)
-  [Other](#)

-  [Check List](#)
-  [Q & A](#)
-  [Self-Test Feature Check](#)

 [Introduction](#)

 [Specifications](#)







-  [Unpacking](#)
-  [Front](#)
-  [Rear](#)

-  [General Specifications](#)
-  [PowerSaver](#)
-  [Preset Display Modes](#)

 [Setup](#)

 [Information](#)

-  [Connecting Your Monitor](#)
-  [Installing the Monitor Driver](#)
 -  [Automatic](#)
 -  [Manual](#)
-  [Installing VESA compliant mounting](#)

-  [Service](#)
 -  [Terms](#)
 -  [Regulatory](#)
 -  [Natural Color](#)
 -  [For Better Display](#)
 -  [Authority](#)
-



- ▶ **Notational**
- ▶ Power
- ▶ Installation
- ▶ Clean
- ▶ Other

Please read the following safety instructions as they are designed to prevent damage to property and harm to the user.



Warning / Caution



Failure to follow directions noted by this symbol could result in bodily harm or damage to equipment.

Notational Conventions



Prohibited



Important to read and understand at all times



Do not disassemble



Disconnect the plug from the outlet



Do not touch



Grounding to prevent an electric shock



- ▶ Notational
- ▶ **Power**
- ▶ Installation
- ▶ Clean
- ▶ Other



When not used for extended periods of time, set your PC to DPMS. If using a screen saver, set it to the active screen mode.



Do not use a damaged or loose plug.

- This may cause an electric shock or fire.



Do not pull the plug out by the wire nor touch the plug with wet hands.

- This may cause an electric shock or fire.



Use only a properly grounded plug and receptacle.

- An improper ground may cause electric shock or equipment damage.



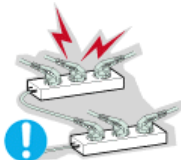
Do not excessively bend the plug and wire nor place heavy objects upon them, which could cause damage.

- Failure to do so may cause an electric shock or fire.



Disconnect the plug from the outlet during storms or lightening or if it is not used for a long period of time.

- Failure to do so may cause an electric shock or fire.



Do not connect too many extension cords or plugs to an outlet.

- This may cause a fire.



Safety Instructions

- ▶ Notational
- ▶ Power
- ▶ **Installation**
- ▶ Clean
- ▶ Other



- **Do not cover the vents on the monitor cabinet.**
 - Bad ventilation may cause a breakdown or fire.



- **Put your monitor in a location with low humidity and a minimum of dust.**
 - An electric shock or fire could result inside the monitor.



- **Do not drop the monitor when moving it.**
 - This may cause damage to the product or human body.



- **Place the monitor on a flat and stable surface.**
 - The monitor can cause injury by falling.



- **Set down the monitor carefully.**
 - It could be damaged or broken.



- **Do not place the monitor face down.**
 - The CDT surface may be damaged.



- ▶ Notational
- ▶ Power
- ▶ Installation
- ▶ **Clean**
- ▶ Other



When cleaning the monitor case or the surface of the TFT-LCD, wipe with a slightly moistened, soft fabric.



● **Do not spray detergent directly on the monitor.**



● **Use the recommended detergent with a smooth cloth.**



● **If the connector between the plug and the pin is dusty or dirty, clean it properly with a dry cloth.**

- A dirty connector can cause an electric shock or fire.



● **Do not set a glass of water, chemicals or any small metal objects on the monitor.**

- This may cause damage, electric shock or a fire.
- If a foreign substance gets into the monitor, disconnect the plug and then [contact a service center](#).



Safety Instructions

- ▶ Notational
- ▶ Power
- ▶ Installation
- ▶ Clean
- ▶ Other



● **Do not remove cover(or back). No user serviceable parts inside.**

- This may cause an electric shock or a fire.
- Refer servicing to qualified service personnel.



● **If your monitor does not operate normally - in particular, if there are any unusual sounds or smells coming from it - unplug it immediately and [contact an authorized dealer or service.](#)**

- This may cause an electric shock or a fire.



● **Do not place any heavy objects on the monitor.**

- This may cause an electric shock or a fire.



● **For each hour of looking at the monitor, you should let your eyes rest for 5 minutes.**

- This will reduce eye fatigue.



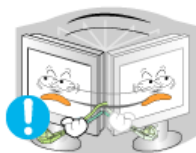
● **Do not use or store inflammable substances near the monitor.**

- This may cause an explosion or fire.



● **Do not try to move the monitor by pulling on the wire or the signal cable.**

- This may cause a breakdown, electric shock or a fire due to damage to the cable.



● **Do not move the monitor right or left by pulling only the wire or the signal cable.**

- This may cause a breakdown, electric shock or a fire due to damage to the cable.



● **Never insert anything metallic into the monitor openings.**

- This may cause an electric shock, fire or injury.

● **Keep all power adaptors apart.**



- Possible fire hazard.
-



Keep power adaptor away from any other heat source.

- Possible fire hazard.
-



Remove and discard vinyl bag from power adaptor before use.

- Possible fire hazard.
-



Always keep power adaptor in well-ventilated area.



If you view a fixed screen for an extended period of time, residual image or blurriness may appear.

- Change the mode to energy save or set a screensaver to moving picture when you need to be away from the monitor for an extended period of time.

SyncMaster 173T/193T/191T plus/153T/174T



Introduction

- ▶ Unpacking
- ▶ Front
- ▶ Rear

● Monitor and Stand



Please make sure the following items are included with your monitor. If any items are missing, [contact your dealer](#).

● Power Cord



● Signal Cable



● DVI Cable(Optional)



● Quick Setup Guide



● Warranty Card (Not available in all locations)



● User's Guide and Driver Installation CD



● Pivot S/W CD(Optional)



● For Multimedia model (Option)



Multimedia Speaker Stand



Sound Cable

SyncMaster 170N/171N/172N/173N/191N/192N/193N/150N/151N/152N



Introduction

- ▶ Unpacking
- ▶ Front
- ▶ Rear

● Monitor and Stand



Please make sure the following items are included with your monitor. If any items are missing, [contact your dealer](#).

● Power Cord



● Signal Cable



● Quick Setup Guide



● Warranty Card (Not available in all locations)



● User's Guide and Driver Installation CD



● Pivot S/W CD(Optional)



● For Multimedia model (Option)



Multimedia Speaker Stand



Sound Cable

SyncMaster 173T/193T/191T plus/153T/174T

[Index](#) | [Safety Instructions](#) | [Introduction](#) | [Setup](#) | [On-Screen Display](#) | [Troubleshooting](#) | [Specifications](#) | [Information](#)



- ▶ Unpacking
- ▶ Front
- ▶ Rear



- 1. Auto button** Use this button to auto adjustment direct access.
- 2. Exit button** Use this button to Exit the active menu or the OSD.
Source button When push the 'Source' button, then Selects the Video signal while the OSD is off. (When the Source button is pressed to change the input mode, a message appears in the center of the screen displaying the current mode -- analog or digital input signal.)
Note: If you select the Digital mode, you must connect your monitor to the graphic card with a digital port using the DVI cable.
- 3. MagicBright button** MagicBright is a new feature providing optimum viewing environment depending on the contents of the image you are watching. Currently three different modes are available: Text, Internet, and Entertain. Each mode has its own pre-configured brightness value. You can easily select one of three settings by simply pressing MagicBright control buttons.
- 4. Adjust buttons** These buttons allow you to highlight and adjust items in the menu.
- 5. Menu button** Use this button to open the OSD and activate a highlighted menu item.
- 6. Power button** Use this button to turn the monitor on and off.
- 7. Power indicator** This light glows green during normal operation, and blinks green once as the monitor saves your adjustments.

Note: See [PowerSaver](#) described in the manual for further information regarding power saving functions. For energy conservation, turn your monitor OFF when it is not needed, or when leaving it unattended for long periods.

SyncMaster 170N/171N/172N/173N/191N/192N/193N/150N/151N/152N



Introduction

- ▶ Unpacking
- ▶ **Front**
- ▶ Rear



- 1. Auto button** Use this button to auto adjustment direct access.
- 2. Exit button** Use this button to Exit the active menu or the OSD.
- 3. MagicBright button** MagicBright is a new feature providing optimum viewing environment depending on the contents of the image you are watching. Currently three different modes are available: Text, Internet, and Entertain. Each mode has its own pre-configured brightness value. You can easily select one of three settings by simply pressing MagicBright control buttons.
- 4. Adjust buttons** These buttons allow you to highlight and adjust items in the menu.
- 5. Menu button** Use this button to open the OSD and activate a highlighted menu item.
- 6. Power button** Use this button to turn the monitor on and off.
- 7. Power indicator** This light glows green during normal operation, and blinks green once as the monitor saves your adjustments.

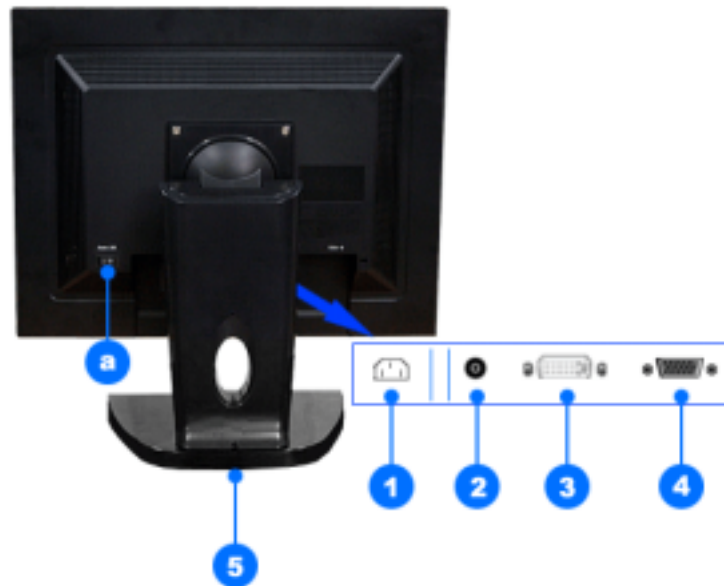
Note: See [PowerSaver](#) described in the manual for further information regarding power saving functions. For energy conservation, turn your monitor OFF when it is not needed, or when leaving it unattended for long periods.

SyncMaster 173T/193T/191T plus/153T/174T

[Index](#) | [Safety Instructions](#) | [Introduction](#) | [Setup](#) | [On-Screen Display](#) | [Troubleshooting](#) | [Specifications](#) | [Information](#)



- ▶ [Unpacking](#)
- ▶ [Front](#)
- ▶ [Rear](#)



(The configuration at the back of the monitor may vary from product to product.)

- 1. Power port** Connect the power cord for your monitor to the power port on the back of the monitor.
- 2. AudioPower - Out (Option)**
- 3. DVI port** Connect the DVI Cable to the DVI Port on the back of your Monitor.
- 4. Signal port** Connect the signal cable to the 15-pin, D-sub connector on the back of your monitor.
- 5. Pin** Press the button on the bottom rear of the stand in order to lock down the stand.
Note : Always have your monitor faced front side down on a level surface (not resting on the stand) before locking it down. Pressing the button while the monitor stand is resting on a flat surface may cause your monitor to topple or fall and cause personal injury and/or damage to the unit.

a. Power on/off Switch

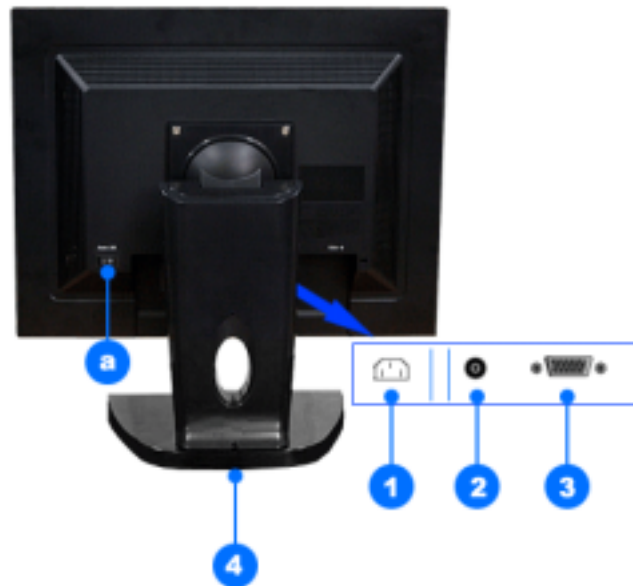
Note: See [Connecting Your Monitor](#) for further information regarding cable connections.

SyncMaster 170N/171N/172N/173N/191N/192N/193N/150N/151N/152N

[Index](#) | [Safety Instructions](#) | [Introduction](#) | [Setup](#) | [On-Screen Display](#) | [Troubleshooting](#) | [Specifications](#) | [Information](#)



- ▶ [Unpacking](#)
- ▶ [Front](#)
- ▶ [Rear](#)



(The configuration at the back of the monitor may vary from product to product.)

- 1. Power port** Connect the DC Adapter for your monitor to the power port on the back of the monitor.
 - 2. AudioPower - Out (Option)**
 - 3. Signal port** Connect the signal cable to the 15-pin, D-sub connector on the back of your monitor.
 - 4. Pin** Press the button on the bottom rear of the stand in order to lock down the stand.
Note : Always have your monitor faced front side down on a level surface (not resting on the stand) before locking it down. Pressing the button while the monitor stand is resting on a flat surface may cause your monitor to topple or fall and cause personal injury and/or damage to the unit.
- a. Power on/off Switch**

Note: See [Connecting Your Monitor](#) for further information regarding cable connections.

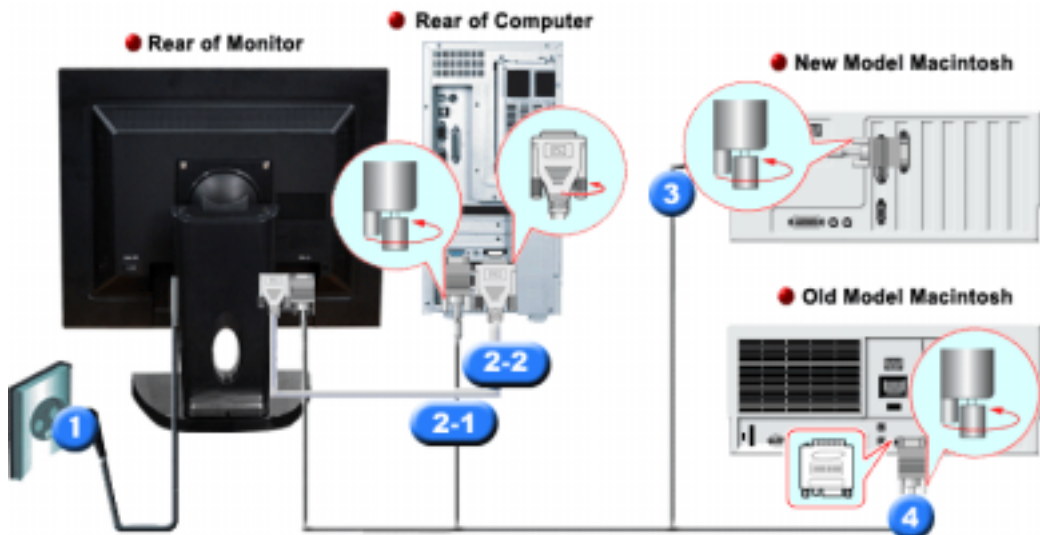
SyncMaster 173T/193T/191T plus/153T/174T



Index | Safety Instructions | Introduction | **Setup** | On-Screen Display | Troubleshooting | Specifications | Information



- ▶ Connecting Your Monitor
- ▶ Installing the Monitor Driver
- ▶ Installing VESA compliant mounting

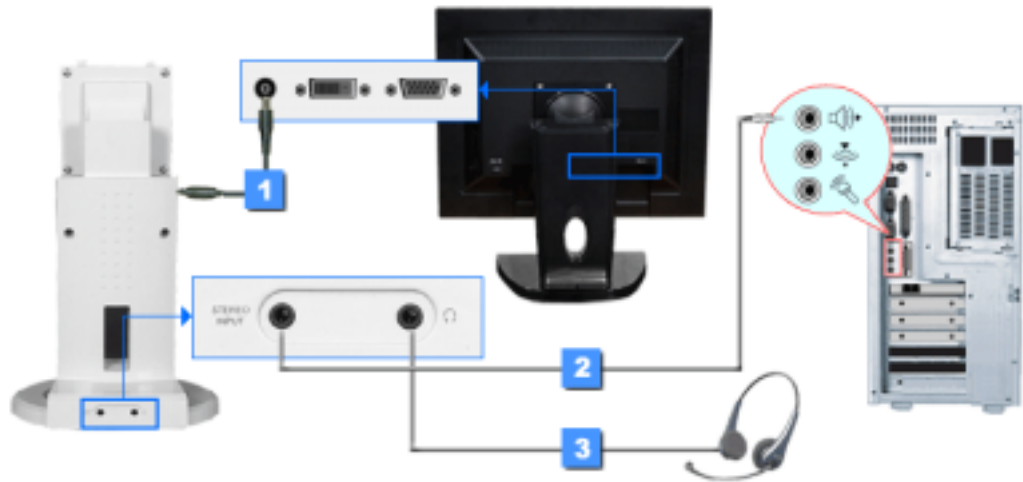
● Setup-General



1. Connect the power cord for your monitor to the power port on the back of the monitor. Plug the power cord for the monitor into a nearby outlet.
- 2-1. Using the D-sub (Analogue) connector on the video card. Connect the signal cable to the 15-pin, D-sub connector on the back of your monitor.

- 2-2. Using the DVI (Digital) connector on the video card. Connect the DVI Cable to the DVI Port on the back of your Monitor.

3. Connected to a Macintosh. Connect the monitor to the Macintosh computer using the D-SUB connection cable.
4. In the case of an old model Macintosh, you need to connect the monitor using a special Mac adaptor.
5. Turn on your computer and monitor. If your monitor displays an image, installation is complete.

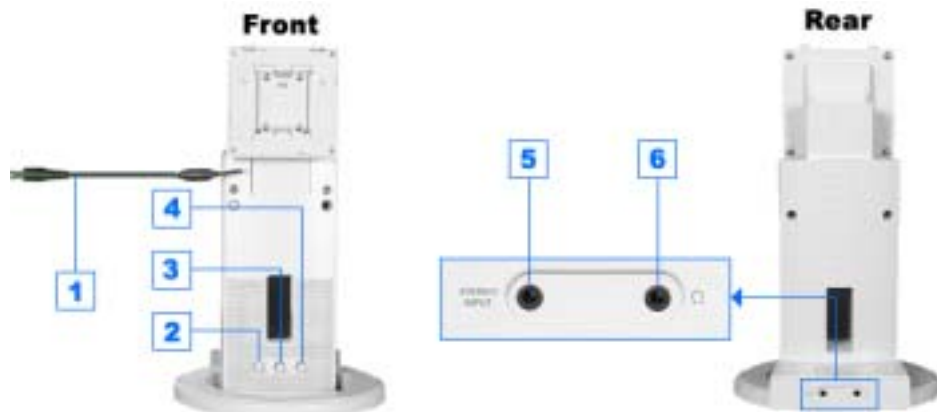
- ⚠ You may get a blank screen depending on the type of video card you are using, if you connect simultaneously both the D-sub and DVI cables to one computer.
- ⚠ If you connect properly your monitor using the DVI connector but get a blank or fuzzy screen, check to see if the monitor status is set to analogue. Press Source button to have the monitor double-check the input signal source.

● Setup-For Multimedia model (Option)



1. Connect the power cord of the multimedia stand to the multimedia stand power port on the back of the monitor.
2. Connect a sound cable from the input source (sound card, computer, CD-ROM drive).
3. To listen in privacy, connect headphones here.

● Multimedia Speaker Stand



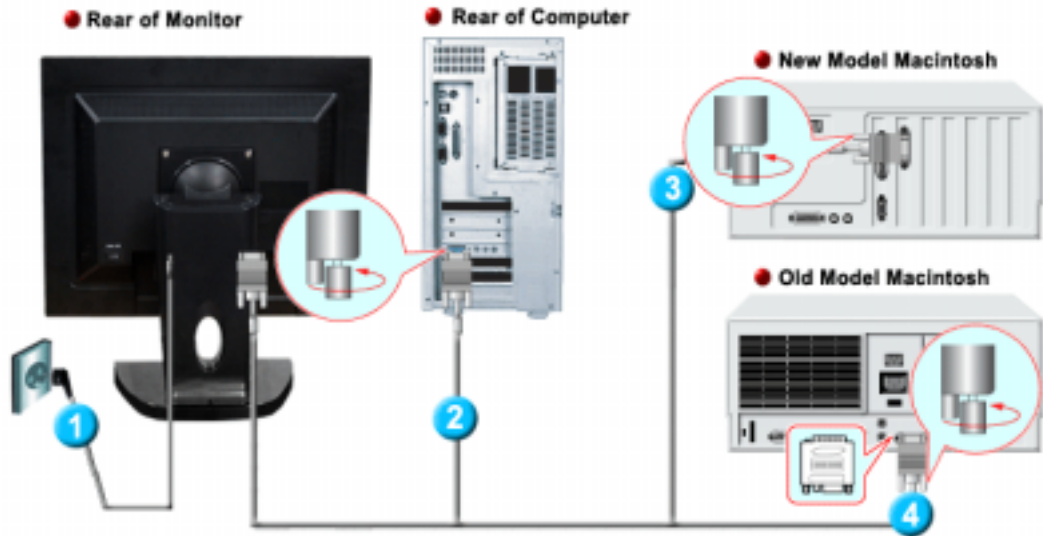
1. Speaker Power Cord
2. On/Off Volume
3. Bass Control
4. Treble Control
5. Stereo Input Jack
6. Headphone Jack

SyncMaster 170N/171N/172N/173N/191N/192N/193N/150N/151N/152N



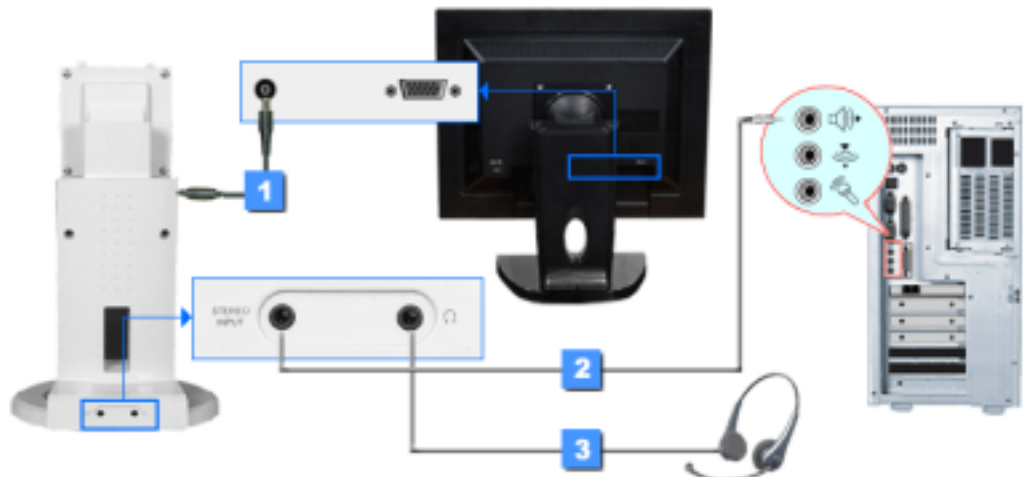
- ▶ Connecting Your Monitor
- ▶ Installing the Monitor Driver
- ▶ Installing VESA compliant mounting

● Setup-General



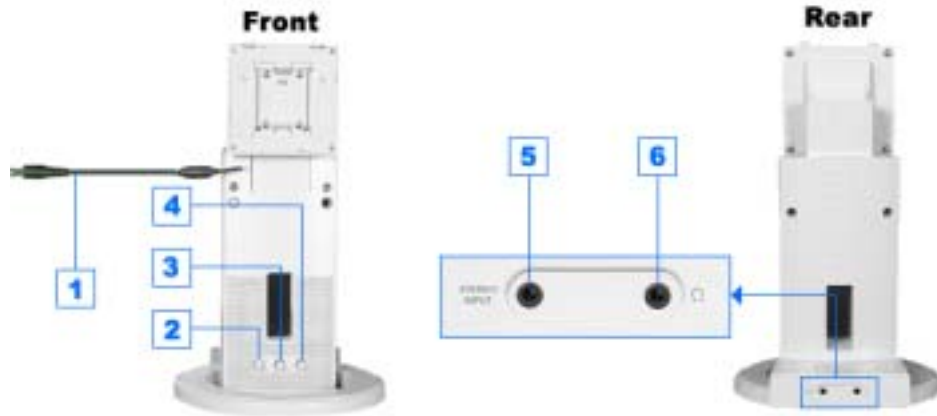
1. Connect the power cord for your monitor to the power port on the back of the monitor. Plug the power cord for the monitor into a nearby outlet.
2. Connect the signal cable to the 15-pin, D-sub connector on the back of your monitor.
3. Connect the monitor to the Macintosh computer using the D-SUB connection cable.
4. In the case of an old model Macintosh, you need to connect the monitor using a special Mac adaptor.
5. Turn on your computer and monitor. If your monitor displays an image, installation is complete.

● Setup-For Multimedia model (Option)



1. Connect the power cord of the multimedia stand to the multimedia stand power port on the back of the monitor.
2. Connect a sound cable from the input source (sound card, computer, CD-ROM drive).
3. To listen in privacy, connect headphones here.

● **Multimedia Speaker Stand**



1. **Speaker Power Cord**
2. **On/Off Volume**
3. **Bass Control**
4. **Treble Control**
5. **Stereo Input Jack**
6. **Headphone Jack**



Setup

- ▶ Connecting Your Monitor
- ▶ **Installing the Monitor Driver**
- ▶ Installing VESA compliant mounting

Automatic



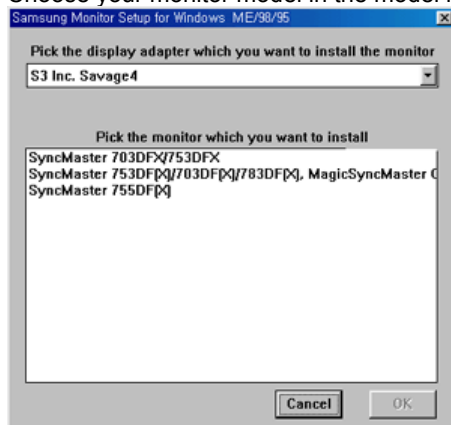
Note When prompted by the operating system for the monitor driver, insert the CD-ROM included with this monitor. Driver installation is slightly different from one operating system to another. Follow the directions as appropriate for the operating system you have.

Prepare a blank disk and download the driver program file at the Internet web site shown here.

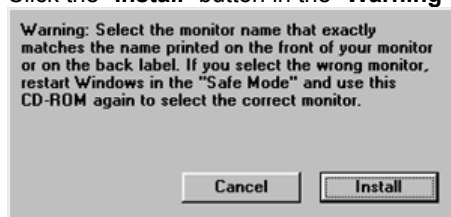
- Internet web site : <http://www.samsung-monitor.com/> (Worldwide)
<http://www.samsungusa.com/monitor/> (USA)
<http://www.sec.co.kr/monitor/> (Korea)
<http://www.samsungmonitor.com.cn/> (China)

Windows ME

1. Insert CD into the CD-ROM drive.
2. Click **"Windows ME Driver"**.
3. Choose your monitor model in the model list, then click the **"OK"** button.



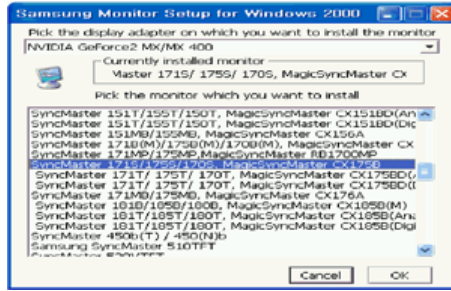
4. Click the **"Install"** button in the **"Warning"** window.



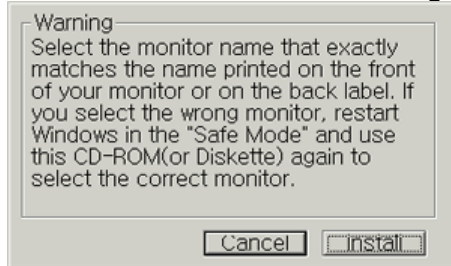
5. Monitor driver installation is completed.

Windows XP/2000

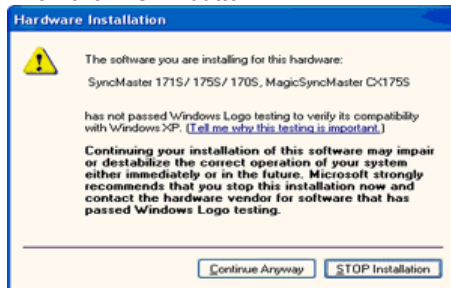
1. Insert CD into the CD-ROM drive.
2. Click **"Windows XP/2000 Driver"**.
3. Choose your monitor model in the model list, then click the **"OK"** button.



4. Click the **"Install"** button in the **"Warning"** window.



5. If you can see following **"Message"** window, then click the **"Continue Anyway"** button. Then click **"OK"** button.



This monitor driver is under certifying MS logo, and this installation don't damage your system. The certified driver will be posted on Samsung Monitor Homepage <http://www.samsung-monitor.com/>.

6. Monitor driver installation is completed.



Setup

- ▶ Connecting Your Monitor
- ▶ **Installing the Monitor Driver**
- ▶ Installing VESA compliant mounting

Manual



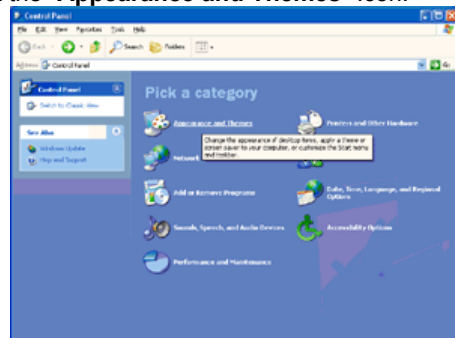
When prompted by the operating system for the monitor driver, insert the CD-ROM included with this monitor. Driver installation is slightly different from one operating system to another. Follow the directions as appropriate for the operating system you have.

Prepare a blank disk and download the driver program file at the Internet web site shown here.

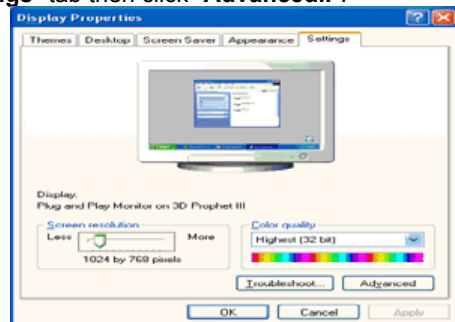
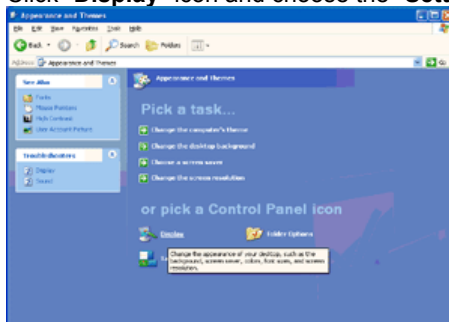
- Internet web site : <http://www.samsung-monitor.com/> (Worldwide)
- <http://www.samsungusa.com/monitor/> (USA)
- <http://www.sec.co.kr/monitor/> (Korea)
- <http://www.samsungmonitor.com.cn/> (China)

Microsoft® Windows® XP Operating System

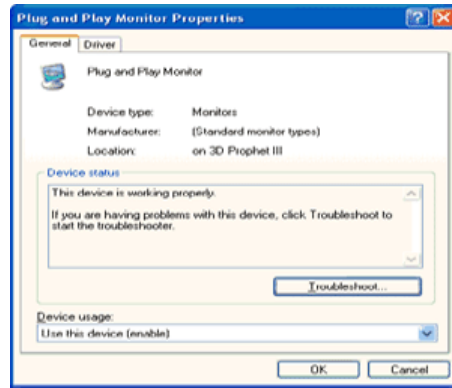
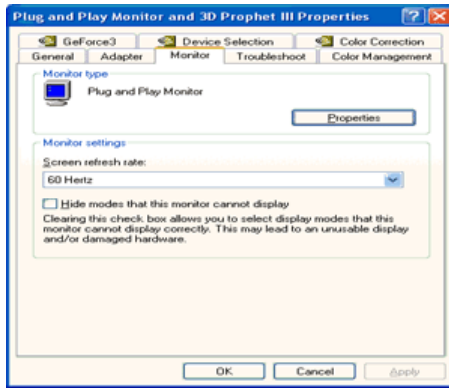
1. Insert CD into the CD-ROM driver.
2. Click **"Start"** → **"Control Panel"** then click the **"Appearance and Themes"** icon.



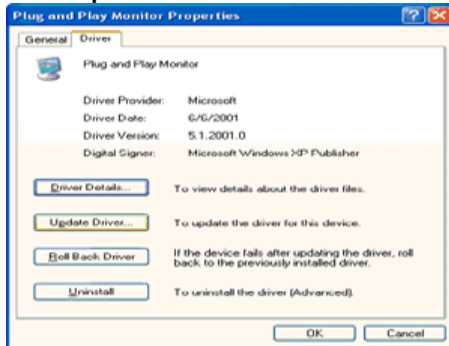
3. Click **"Display"** icon and choose the **"Settings"** tab then click **"Advanced.."**.



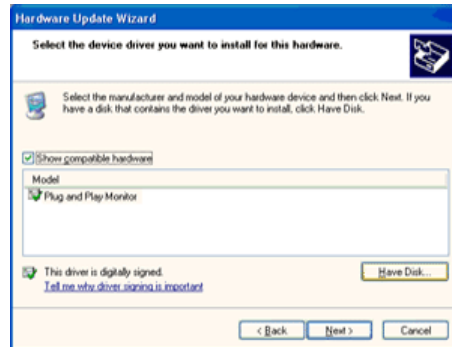
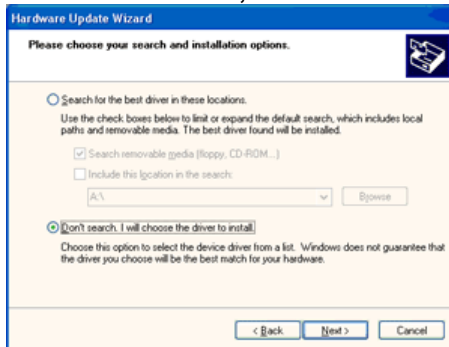
4. Click the **"Properties"** button on the **"Monitor"** tab and select **"Driver"** tab.



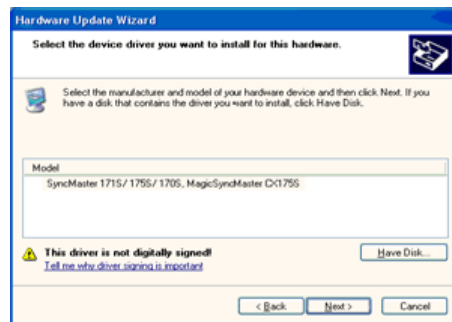
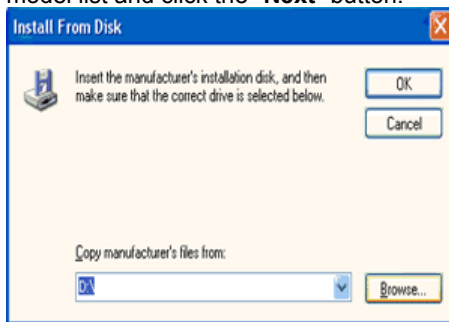
- Click **"Update Driver.."** and select **"Install from a list or.."** then click **"Next"** button.



- Select **"Don't search, I will.."** then click **"Next"** and then click **"Have disk"**.



- Click the **"Browse"** button then choose A:(D:\Driver) and choose your monitor model in the model list and click the **"Next"** button.

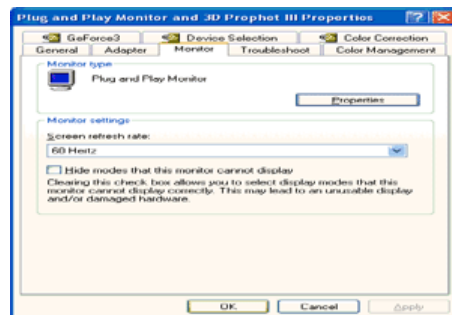
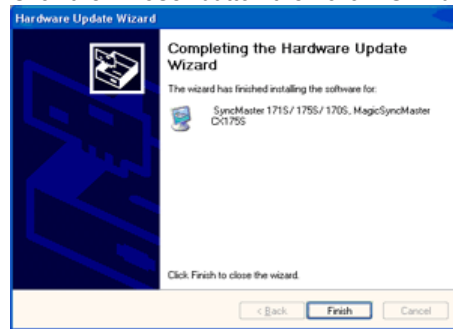


- If you can see following **"Message"** window, then click the **"Continue Anyway"** button. Then click **"OK"** button.



This monitor driver is under certifying MS logo, and this installation don't damage your system. The certified driver will be posted on Samsung Monitor Homepage <http://www.samsung-monitor.com/>.

9. Click the **"Close"** button then click **"OK"** button continually.



10. Monitor driver installation is completed.

● Microsoft® Windows® 2000 Operating System

● When you can see **"Digital Signature Not Found"** on your monitor, follow these steps.

1. Choose **"OK"** button on the **"Insert disk"** window.
2. Click the **"Browse"** button on the **"File Needed"** window.
3. Choose A:(D:\Driver) then click the **"Open"** button and then click **"OK"** button.

● How to install

1. Click **"Start"**, **"Setting"**, **"Control Panel"**.
2. Double click the **"Display"** icon.
3. Choose the **"Settings"** tab and then click **"Advanced.."**.
4. Choose **"Monitor"**.
 - Case1: If the **"Properties"** button is inactive, it means your monitor is properly configured. Please stop installation
 - Case2: If the **"Properties"** button is active, click the **"Properties"** button then follow next steps continually.
5. Click **"Driver"** and then click on **"Update Driver.."** then click on the **"Next"** button.
6. Choose **"Display a list of the known drivers for this device so that I can choose a specific driver"** then click **"Next"** and then click **"Have disk"**.
7. Click the **"Browse"** button then choose A:(D:\Driver).
8. Click the **"Open"** button, then click **"OK"** button.
9. Choose your monitor model and click the **"Next"** button then click **"Next"** button.
10. Click the **"Finish"** button then the **"Close"** button.

If you can see the **"Digital Signature Not Found"** window then click the **"Yes"** button. And click the **"Finish"** button then the **"Close"** button.

● Microsoft® Windows® Millennium Operating System

1. Click **"Start"**, **"Setting"**, **"Control Panel"**.
2. Double click **"Display"** icon.
3. Select the **"Settings"** tab and click **"Advanced Properties"** button.

4. Select the "**Monitor**" tab.
5. Click the "**Change**" button in the "**Monitor Type**" area.
6. Choose "**Specify the location of the driver**".
7. Choose "**Display a list of all the driver in a specific location..**" then click "**Next**" button.
8. Click the "**Have Disk**" button
9. Specify A:\(D:\driver) then click "**OK**" button.
10. Select "**Show all devices**" and choose the monitor that corresponds to the one you connected to your computer and click "**OK**".
11. Continue choosing "**Close**" button and "**OK**" button until you close the Display Properties dialogue box.
(You can get some other screen for warning message or others, then click the appreciate option for your monitor.)

● Microsoft® Windows® NT Operating System

1. Click **Start, Settings, Control Panel**, and then double-click **Display** icon.
2. In Display Registration Information window, click Settings Tab and then click **All Display Modes**.
3. Select a mode that you wish to use (Resolution, Number of colors and Vertical frequency) and then click **OK**.
4. Click **Apply** button if you see the screen working normally after clicking Test. If the screen is not normal, change to a different mode (lower mode of resolution, colors or frequency).

Note: If there is no Mode at **All Display Modes**, select the level of resolution and vertical frequency by referring to the [Preset Display Modes](#) in the user guide.

● Linux Operating System

To execute X-Window, you need to make the X86Config file, which is a type of system setting file.

1. Press Enter at the first and the second screen after executing the X86Config file.
2. The third screen is for **setting your mouse**.
3. Set a mouse for your computer.
4. The next screen is for **selecting a keyboard**.
5. Set a Keyboard for your computer.
6. The next screen is for **setting your monitor**.
7. First of all, set a **horizontal frequency** for your monitor. (You can enter the frequency directly.)
8. Set a **vertical frequency** for your monitor. (You can enter the frequency directly.)
9. Enter the **model name of your monitor**. This information will not affect the actual execution of X-Window.
10. You have **finished** setting up your monitor.
Execute X-Window after setting other requested hardware.

Align the Mounting Interface Pad with the holes in the Rear Cover Mounting Pad and secure it with the four screws that came with the arm-type base, wall mount hanger or other base.



Setup

- ▶ Connecting Your Monitor
- ▶ Installing the Monitor Driver
- ▶ **Installing VESA compliant mounting**

Removing the base



1. Turn off your monitor and unplug its power cord.
2. Lay the LCD monitor face-down on a flat surface with a cushion beneath it to protect the screen.
3. Remove the two screws and then remove the Stand from the LCD monitor.

Attaching a base

NOTE: This monitor accepts a 100mm x 100mm VESA-compliant mounting interface pad.



1. Rear cover mounting pad
2. Mounting interface pad

Align the Mounting Interface Pad with the holes in the Rear Cover Mounting Pad and secure it with the four screws that came with the arm-type base, wall mount hanger or other base.



Setup

- ▶ Connecting Your Monitor
- ▶ Installing the Monitor Driver
- ▶ Installing VESA compliant mounting
- ▶ **MagicTune™ Installation**

MagicTune™ and Other Major Features

1. The MagicTune™ (display adjustment) feature is available only for Windows 98 SE or later versions.
2. Installing the MagicTune™ (display adjustment) software may cause a slight delay when starting the computer.
3. The MagicTune™ (display adjustment) feature is not available in Game mode or Full Screen video mode.
4. When activated in a mode in which the four edges of the display are black (Game or DOS mode), the "Auto" feature of the LCD monitor may cause the screen to be displayed off-center.
5. Visit <http://www.portrait.com> for questions about MagicTune™ technology or for technical support.

1. [Overview](#)
2. [System Requirements](#)
3. [Step-By-Step Installation](#)

1. Overview- What is MagicTune™

Monitor performance can vary due to the graphics card, host computer, lighting conditions and other environmental factors. In order to get the best image on a monitor requires you to adjust it for your unique setting. Unfortunately, the manual controls available to tune the image often prove to be challenging. Proper adjustment (tuning) requires an easy to use program that goes through a step-by-step process to obtain the best overall picture quality.

In most cases even simple adjustments to Brightness, or Contrast require navigation of the multi-level, on-screen display (OSD) menus that are not easy to understand. Furthermore, there is no feedback to assist in correctly setting the controls of the monitor. MagicTune™ is a software utility that guides you through the tuning process with easy to understand instructions and back ground patterns designed for each monitor control. The display settings for each user can be saved, providing an easy way to select display characteristics in a multi-user environment, or having a single user have multiple defined presets based on content and ambient lighting.

2. System Requirements

MagicTune™ is a software utility that allows monitor adjustment and color tuning using the Display Data Channel Command Interface (DDC/CI) protocol. All adjustments to the display are control via software to eliminate the need to use the monitor on-screen display (OSD).

Windows 98 SE
Windows Me
Windows 2000 Professional
Windows 2000 Server
Windows XP Home Edition
Windows XP Professional

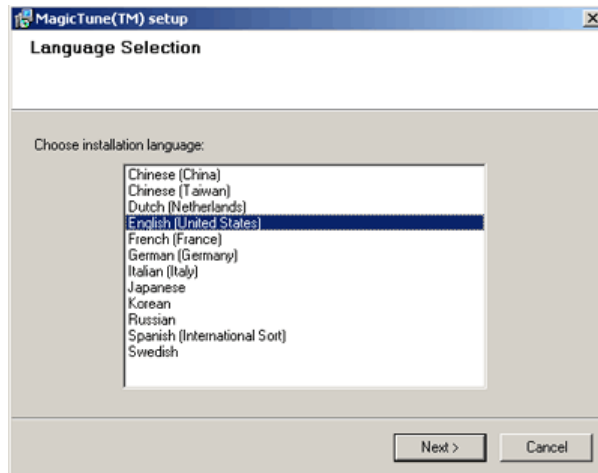
MagicTune™ runs in the back ground and can be accessed through the task tray, start menu, or right click on the desktop. MagicTune™ allows for quick accurate tuning of the display with the ability to easily save and use monitor configurations that are best suited for you.



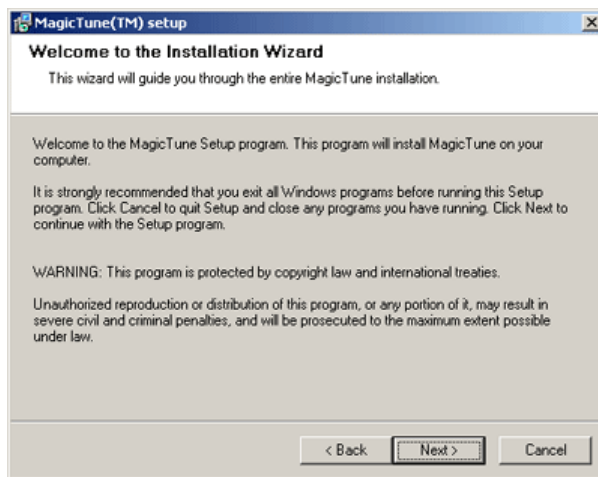
MagicTune™ works properly with Internet Explorer Version 5.5 or higher.

3. Step-By-Step Installation

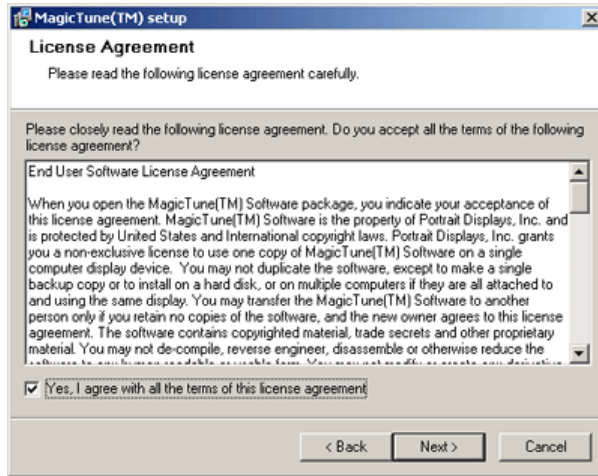
- 1) Click the Magic Tune™ installation file.
- 2) Select installation Language, Click [Next].



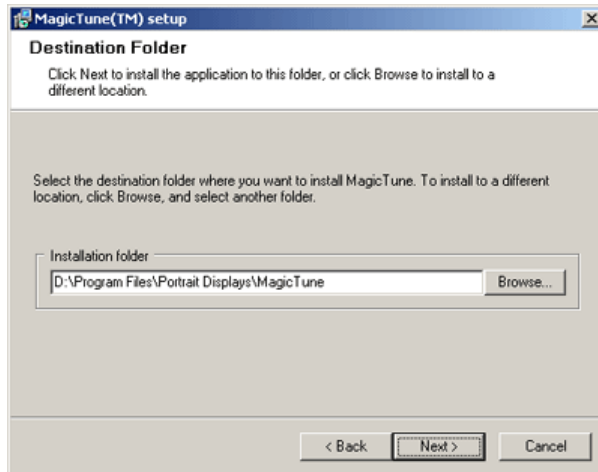
- 3) Starting installation. Click [Next]



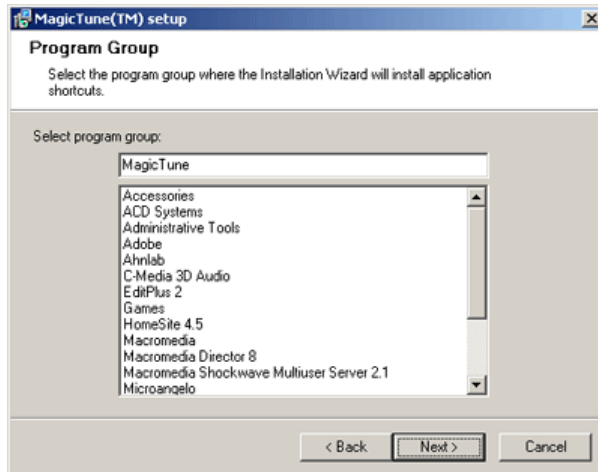
- 4) The MagicTune™ License Agreement is displayed. Read the Terms of Agreement carefully. If you do not agree to the Terms of Agreement, you are not allowed to install MagicTune™. If you click "Agree", the [Next] button becomes activated. Click [Next]



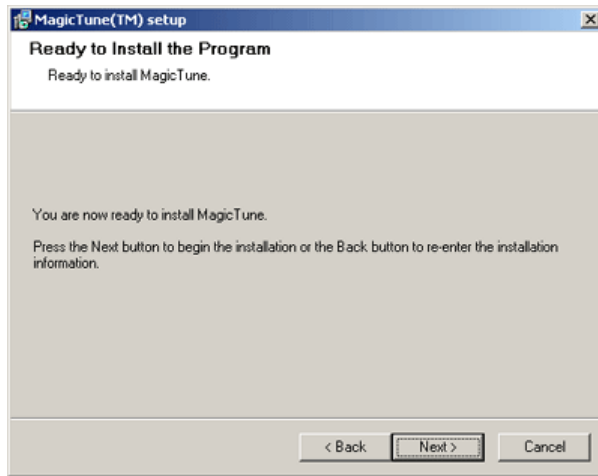
5) Select a location to install Magic Tune™. Click [Next].



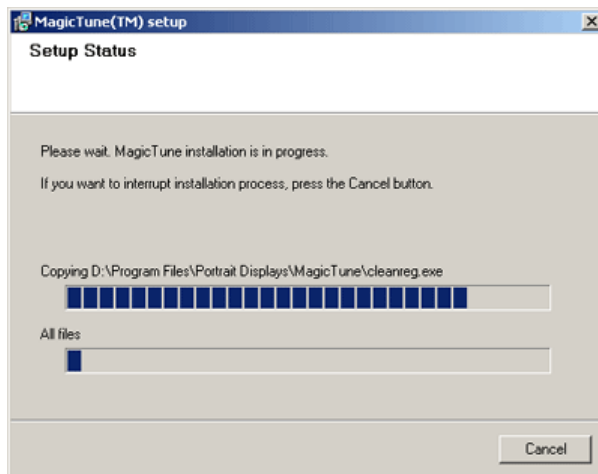
6) Select Program Group to install MagicTune™. Click [Next].



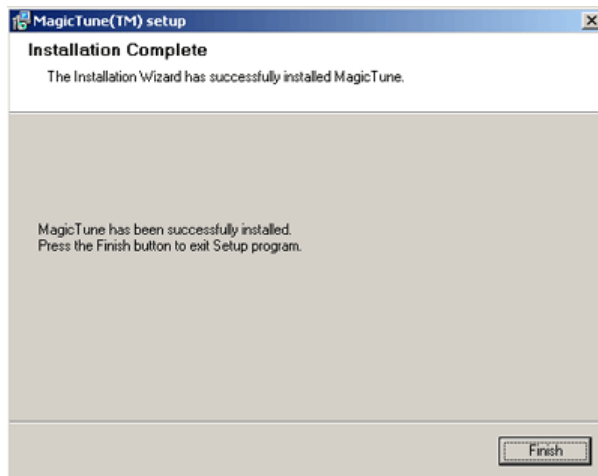
7) Click [Next] to start installing MagicTune™.



8) Install MagicTune™ in the selected location.



9) MagicTune™ has been successfully installed. Click [Finish].



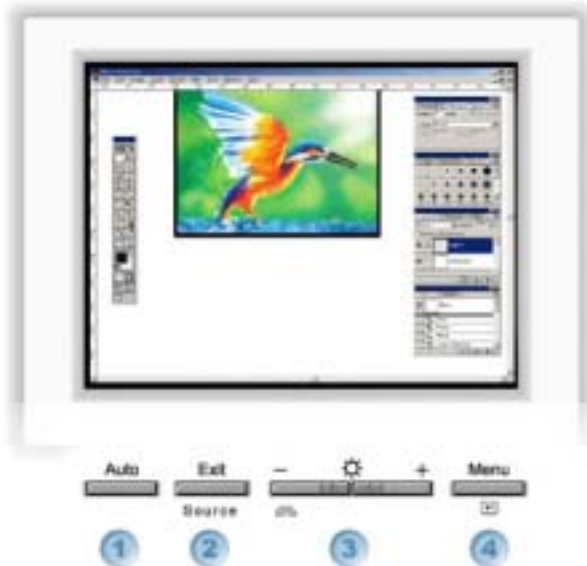
※ For more information about how to use the MagicTune™, see the Help Site of the MagicTune™ program. (http://personalcomputing.portrait.com/us/support/support_mt_contents.html)

Caution : The MagicTune program may not work properly if the power is turned off and on while the program is running. Make sure you close the MagicTune™ program before changing the vertical frequency or resolution. Do not run the MagicTune™ program together with OSD. Otherwise, the program may not work properly as data stored in the monitor may be different from those in the program. If you close and rerun the program, it will work properly because it reads the modified data while reloading.

SyncMaster 173T/193T/191T plus/153T/174T

ON-SCREEN DISPLAY [ON-SCREEN DISPLAY]

 Simply move your mouse over each topic to view information about the on-screen menu.



 OSD Lock/Unlock  MagicBright

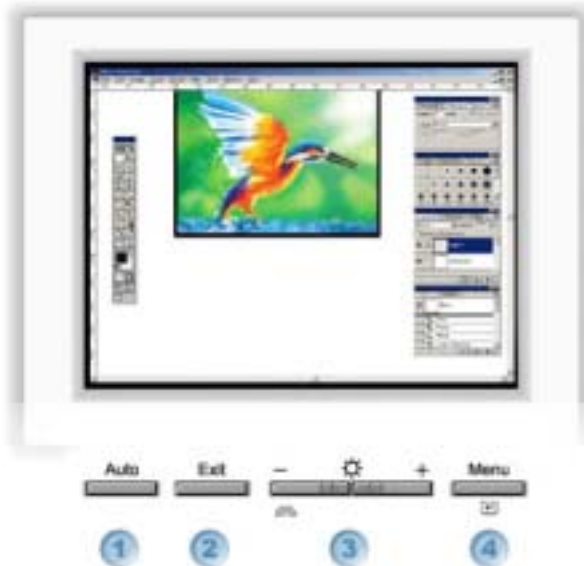
- Brightness
- Contrast
- Image Lock
 - Fine
 - Coarse
- Position
 - H-Position
 - V-Position
- Reset
 - Geometry Reset
 - Color Reset
- Color Temperature
- Color Control
- Language
- Half Tone
- Menu Position
 - H-Position
 - V-Position
- Menu Display Time
- Display Mode
- Auto

- 1 Use this button to auto adjustment direct access.
- 2 Use this button to Exit the active menu or the OSD.
- 3 These buttons allow you to highlight and adjust items in the menu.
- 4 Use this button to open the OSD and activate a highlighted menu item.

SyncMaster 170N/171N/172N/173N/ 191N/192N/193N/150N/151N/152N

ON-SCREEN DISPLAY [ON-SCREEN DISPLAY]

Simply move your mouse over each topic to view information about the on-screen menu.



☀ OSD Lock/Unlock ☀ MagicBright

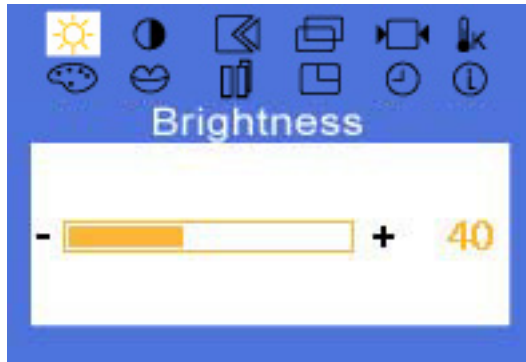
- Brightness
- Contrast
- Image Lock
 - Fine
 - Coarse
- Position
 - H-Position
 - V-Position
- Reset
 - Geometry Reset
 - Color Reset
- Color Temperature
- Color Control
- Language
- Half Tone
- Menu Position
 - H-Position
 - V-Position
- Menu Display Time
- Display Mode
- Auto

- 1 Use this button to auto adjustment direct access.
- 2 Use this button to Exit the active menu or the OSD.
- 3 These buttons allow you to highlight and adjust items in the menu.
- 4 Use this button to open the OSD and activate a highlighted menu item.

Brightness

Menu

How to adjust



Brightness

- Adjust Brightness.

1. Push the **Menu** button.
2. Push the **Menu** button to open the **Brightness** adjustment screen.
3. Use the [+] button to increase the brightness or [-] button to decrease the brightness.

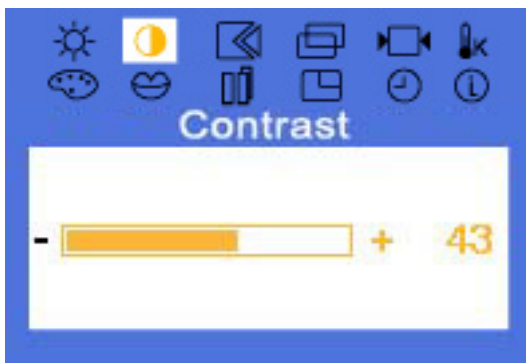
Direct Access Feature :

When OSD is not on the screen,
Push the [+] or [-] button to adjust
brightness.

Contrast

Menu

How to adjust



Contrast

- Adjust Contrast.

1. Push the **Menu** button.
2. Push the [-] button or [+] button until the **Contrast** screen is displayed.
3. Push the **Menu** button to open the **Contrast** adjustment screen.
4. Use the [+] button to increase the contrast or [-] button to decrease the contrast.

Image Lock

Menu

How to adjust



Image Lock [Fine]

- Image Lock is used to fine tune and get the best image by removing noises that creates unstable images with jitters and shimmers.

If satisfactory results are not obtained using the Fine adjustment, use the Coarse adjustment and then use Fine again.

1. Push the **Menu** button.
2. Push the [-] button or [+] button until the **Image Lock** screen is displayed.
3. Push the **Menu** button twice to open the **Fine** adjustment screen.
4. Use the [-] button or [+] button to remove any noise.

Menu

How to adjust



Image Lock [Coarse]

- Image Lock is used to fine tune and get the best image by removing noises that creates unstable images with jitters and shimmers.

If satisfactory results are not obtained using the Fine adjustment, use the Coarse adjustment and then use Fine again.

1. Push the **Menu** button.
2. Push the [-] button or [+] button until the **Image Lock** screen is displayed.
3. Push the **Menu** button again and then press the [-] or [+] button until the **Coarse** screen appears.
4. Push the Menu button to open the **Coarse** adjustment screen.
5. Use the [-] button or [+] button to remove any noise.

H-Position

Menu



How to adjust

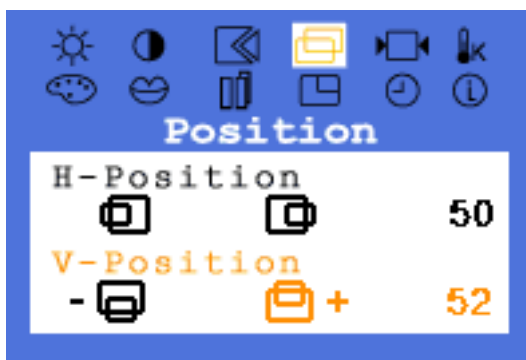
H-Position

- Follow these instructions to change the horizontal position of the monitor's entire display.

1. Push the **Menu** button.
2. Push the [-] button or [+] button until the **H-Position** screen is displayed.
3. Push the **Menu** button to open the **H-Position** adjustment screen.
4. Use the [-] button or [+] button to change the horizontal position of the monitor's viewing area.

V-Position

Menu



How to adjust

V-Position

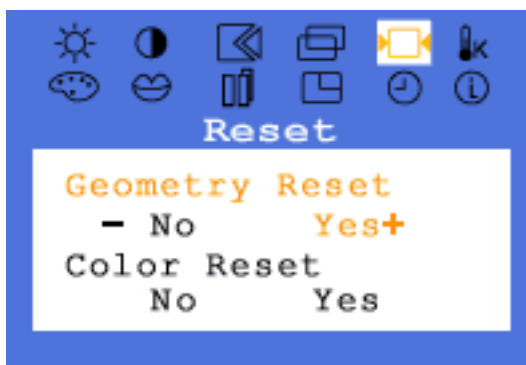
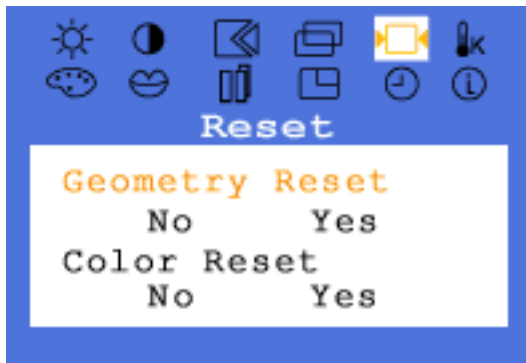
- Follow these instructions to change the vertical position of the monitor's entire display.

1. Push the **Menu** button.
2. Push the [-] button or [+] button until the **V-Position** screen is displayed.
3. Push the **Menu** button to open the **V-Position** adjustment screen.
4. Use the [-] button or [+] button to change the vertical position of the monitor's viewing area.

Reset

Menu

How to adjust



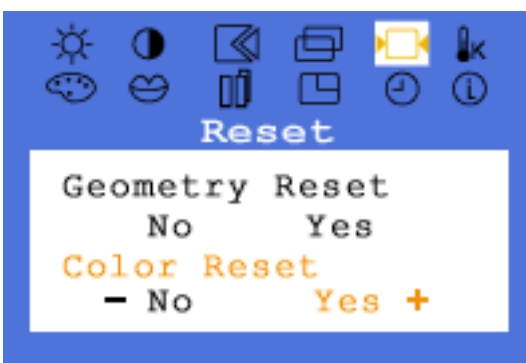
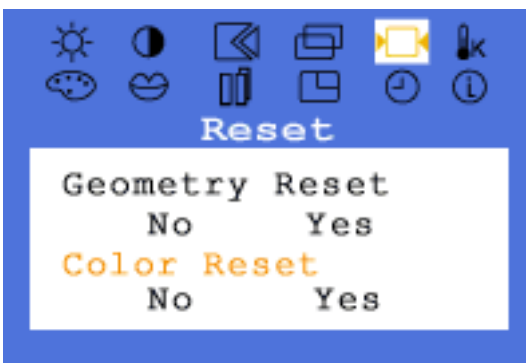
Reset [Geometry Reset]

- Geometry parameters are replaced with the factory default values.

1. Push the **Menu** button.
2. Push the [-] button or [+] button until the **Reset** screen is displayed.
3. Push the **Menu** button twice to open the **Geometry Reset** adjustment screen.
4. Push the [+] button to select **Yes**.
If you don't want to reset the monitor, use the [-] button to select **No**.

Menu

How to adjust



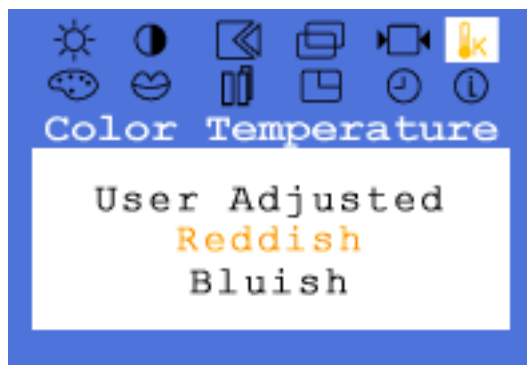
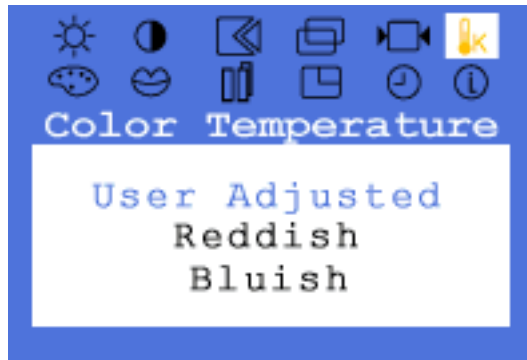
Reset [Color Reset]

- Color parameters are replaced with the factory default values.

1. Push the **Menu** button.
2. Push the [-] button or [+] button until the **Reset** screen is displayed.
3. Push the **Menu** button again and then press the - or + button until the **Color Reset** screen appears.
4. Push the [+] button to select **Yes**.
If you don't want to reset the monitor, use the [-] button to select **No**.

Color Temperature

Menu



How to adjust

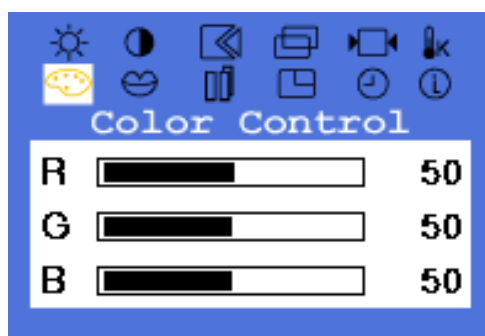
Color Temperature

- Color temperature is a measure of the "warmth" of the image colors.

1. Push the **Menu** button.
2. Push the [-] button or [+] button until the **Color Temperature** screen is displayed.
3. Push the **Menu** button to open the **Color Temperature** adjustment screen.
4. Press the [-] button or [+] button to select User Adjusted, Reddish, Bluish or sRGB .
(When you adjust the Brightness and Contrast after sRGB mode is selected, sRGB mode exits)

Color Control

Menu



How to adjust

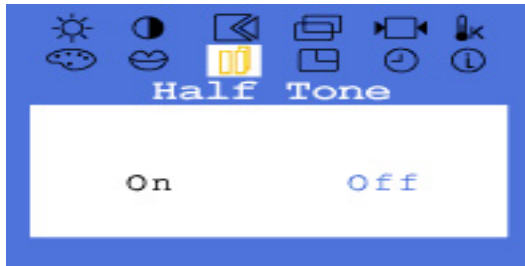
Color Control

- Follow these steps to adjust individual R,G,B color control.

1. Push the **Menu** button.
2. Push the [-] button or [+] button until the **Color Control** screen is displayed.
3. Push the **Menu** button to open the **Color Control** adjustment screen.
Use the [-] or [+] button to select R(ed) G(reen_) or B(lue) and push the Menu button
4. Press the [-] button or [+] button to adjust the color setting

Halftone

Menu



How to adjust

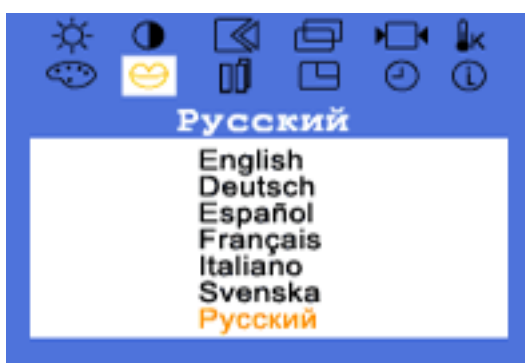
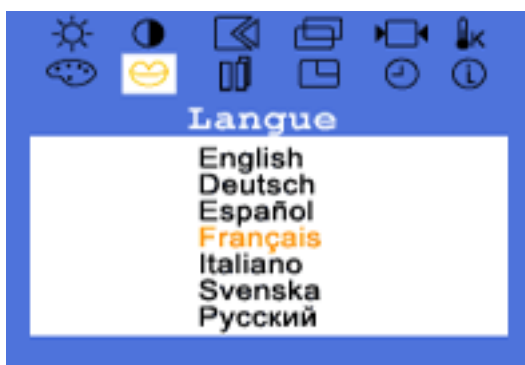
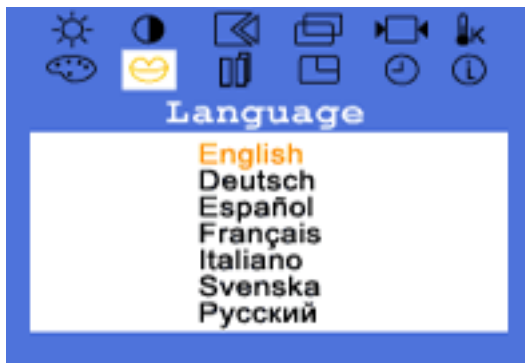
Halftone

- Change the opaqueness of the background of the OSD.

1. Push the **Menu** button.
2. Push the [-] button or [+] button until the **Halftone** screen is displayed.
3. Push the **Menu** button to open the **Halftone** selection screen.
4. Use the [-] button or [+] button to select **On** or **Off**.

Language

Menu



How to adjust

Language

- Follow these steps to change the language used in the menu. You can choose one of ten languages. (English, German, Spanish, French, Italian, Swedish, Russian)

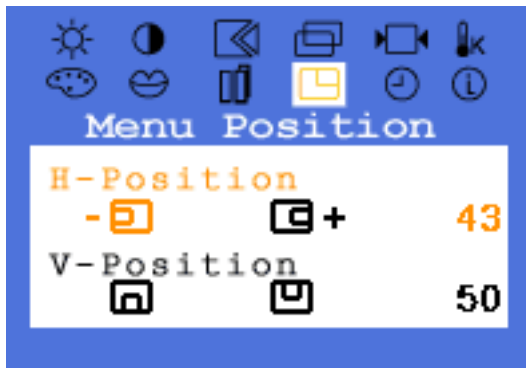
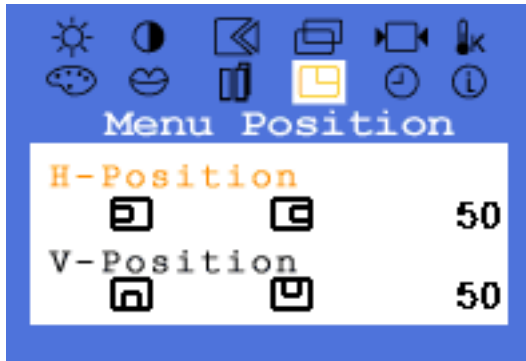
Note : The language chosen affects only the language of the OSD. It has no effect on any software running on the computer.

1. Push the **Menu** button.
2. Push the [-] button or [+] button until the **Languages** screen is displayed.
3. Push the **Menu** button to open the **Languages** selection screen.
4. Use the [-] button or [+] button to select the language you would like to use.

Menu Position

Menu

How to adjust



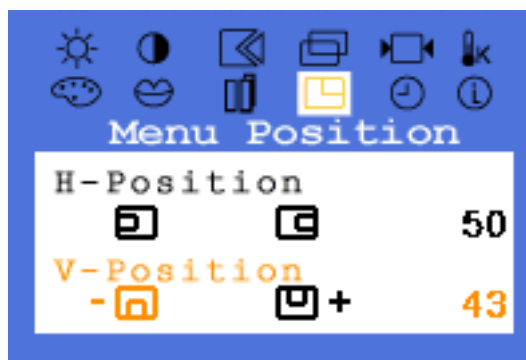
Menu Position(H-Position)

- You can change the horizontal position where the OSD menu appears on your monitor.

1. Push the **Menu** button.
2. Push the [-] button or [+] button until the **Menu Position** screen is displayed.
3. Push the **Menu** button twice to open the **H-Position** adjustment screen.
4. Use the [-] button or [+] button to place the menu in the horizontal position you prefer.

Menu

How to adjust



Menu Position(V-Position)

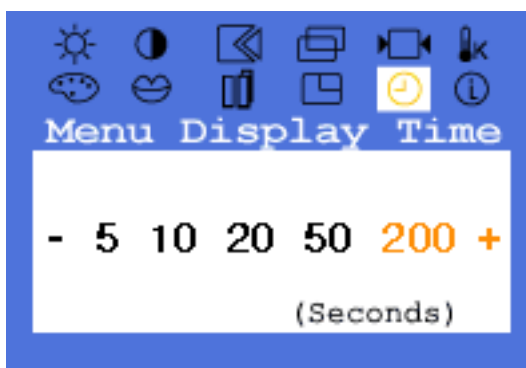
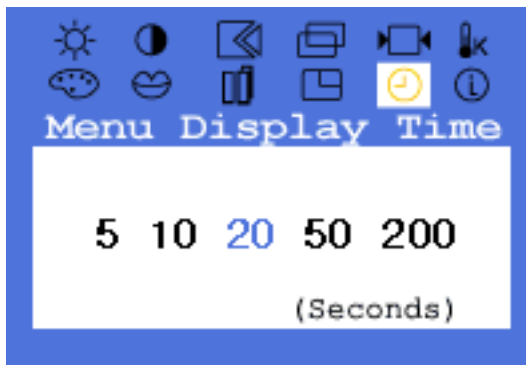
- You can change the vertical position where the OSD menu appears on your monitor.

1. Push the **Menu** button.
2. Push the [-] button or [+] button until the **Menu Position** screen is displayed.
3. Push the **Menu** button again and then press the [-] or [+] button until the **V-Position** screen appears.
4. Push the **Menu** button to open the **V-Position** adjustment screen.
5. Use the [-] button or [+] button to place the menu in the vertical position you prefer.

Menu Display Time

Menu

How to adjust



Menu Display Time

- The menu will automatically turn off if no adjustments are made for a certain time period.

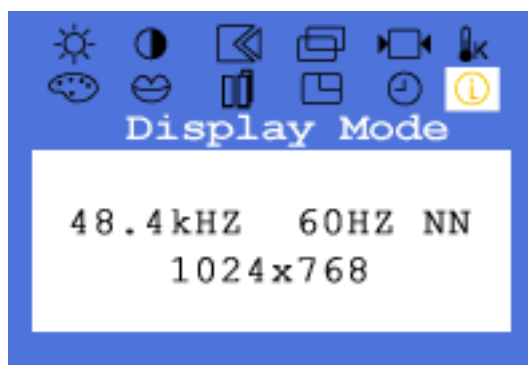
You can set the amount of time the menu will wait before it turns off.

1. Push the **Menu** button.
2. Push the [-] button or [+] button until the **Menu Display Time** screen is displayed.
3. Push the **Menu** button to open the **Menu Display Time** selection screen.
4. Use the [-] button or [+] button to select 5, 10, 20, 50, 200 seconds. 20 seconds is the default value.

Display Mode

Menu

How to adjust



Display Mode

- You can see the frequency, the polarity of the operational signals and the resolution level.

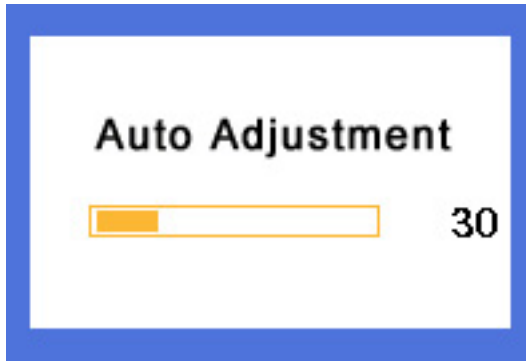
Note : These screens do not allow any changes to the settings, they are for information only.

1. Push the **Menu** button.
2. Push the [-] button or [+] button until the **Display Mode** screen is displayed.

Auto Adjustment

Menu

How to adjust



Auto Adjustment

- Auto adjustment allows the monitor to self-adjust to the incoming video signal.

The values of fine, coarse and position are adjusted automatically.

1. Push the **Auto** button.

Note : To make the automatic adjustment function sharper, execute the 'AUTO' function while the **AUTO PATTERN** is on.

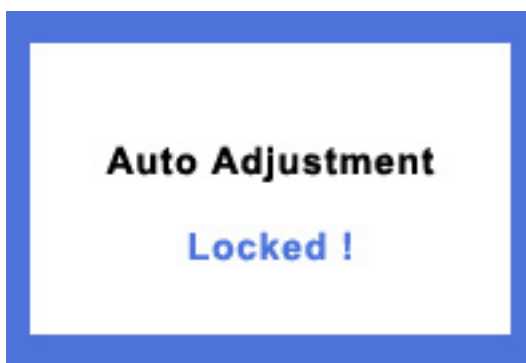
Note: Not Available

This function doesn't work in Digital input.

OSD Lock / Unlock

Menu

How to adjust



OSD Lock/Unlock

1. Push and hold in the Menu button for 5 seconds or more to Lock the OSD.
2. Push and hold in the Menu button for 5 seconds or more to Unlock the OSD.

Magic Bright

Menu

How to adjust

Magic Bright



1. Push the MagicBright button.

Text:

Normal Brightness

For documentations or works involving heavy text.

Internet:

Medium Brightness

For working with mixture of contents such as text and graphics.

Entertain:

High Brightness

For watching motion pictures such as DVD and VCD

SyncMaster 173T/193T/191T plus/153T/174T



Troubleshooting



Before calling for service, check the information in this section to see if you can remedy any problems yourself. If you do need assistance, please call the phone number on the warranty card, [the phone number on the Information section](#) or [contact your dealer](#).

[General](#) | [For Multimedia model](#) | [Check Before Using the MagicTune™](#)

▶ [Check List](#)

▶ [Q & A](#)

▶ [Self-Test Feature Check](#)

General

Symptom	Check List	Solutions
No images on the screen. I cannot turn on the monitor.	Is the power cord connected properly?	Check the power cord connection and supply.
	Can you see " No Connection, Check Signal Cable " on the screen?	(Connected using the D-sub cable) Check the signal cable connection. (Connected using the DVI cable) If you still see an (error) message on the screen when the monitor is connected properly, check to see if the monitor status is set to analogue. Press Source button to have the monitor double-check the input signal source.
	If the power is on, reboot the computer to see the initial screen (the login screen), which can be seen.	If the initial screen (the login screen) appears, boot the computer in the applicable mode (the safe mode for Windows ME/2000/XP) and then change the frequency of the video card. (Refer to the Preset Display Modes) Note: If the initial screen (the login screen) does not appear, contact a service center or your dealer .
	Can you see " Video mode not supported " on the screen?	You can see this message when the signal from the video card exceeds the maximum resolution and frequency that the monitor can properly handle. Adjust the maximum resolution and frequency that the monitor can properly handle.
	There is no image on the screen. Is the power indicator on the monitor blinking at 1 second intervals?	The monitor is in PowerSaver mode. Press a key on the keyboard or move the mouse to activate the monitor and restore the image on the screen. If there is still no image, press the 'Source' button. Then press any key on the keyboard or move the mouse again to activate the monitor and restore the image on the screen.
	Connected using the DVI cable?	You may get a blank screen if you boot the system before you connect the DVI cable, or disconnect and then reconnect the DVI cable while the system is running as certain types of graphic cards do not send out video signals. Connect the DVI cable and then reboot the system.
I cannot see the On	Have you locked the On Screen	Unlock the OSD by pressing the

Screen Display.	Display (OSD) Menu to prevent changes?	MENU button for at least 5 seconds.
The screen shows strange colors or just black and white.	Is the screen displaying only one color as if looking at the screen through a cellophane paper?	Check the signal cable connection. Make sure the video card is fully inserted in its slot.
	Have the screen colors become strange after running a program or due to a crash between applications?	Reboot the computer.
	Has the video card been set properly?	Set the video card by referring to the video card manual.
The screen suddenly has become unbalanced.	Have you changed the video card or the driver?	Adjust screen image position and size using the OSD.
	Have you adjusted the resolution or frequency to the monitor?	Adjust the resolution and frequency at the video card. (Refer to the Preset Display Modes).
The screen can be unbalanced due to the cycle of the video card signals. Readjust Position by referring to the OSD.		
The screen is out of focus or OSD cannot be adjusted.	Have you adjusted the resolution or frequency on the monitor?	Adjust the resolution and frequency of the video card. (Refer to the Preset Display Modes).
LED is blinking but no images on the screen.	Is the frequency properly adjusted when checking the Display Timing on the menu?	Adjust the frequency properly by referring to the video card manual and the Preset Display Modes . (The maximum frequency per resolution may differ from product to product.)
There are only 16 colors shown on the screen. The screen colors have changed after changing the video card.	Have the Windows colors been set properly?	For Windows ME/2000/XP: Set the colors properly at the Control Panel, Display, Settings .
	Has the video card been set properly?	Set the video card by referring to the video card manual.
There is a message that reads "Unrecognized monitor, Plug & Play (VESA DDC) monitor found".	Have you installed the monitor driver?	Install the monitor driver according to the Driver Installation Instructions .
	See the video card manual to see if the Plug & Play (VESA DDC) function can be supported.	Install the monitor driver according to the Driver Installation Instructions .

 **For Multimedia model**

Symptom	Solutions
There is no sound.	Connect the stereo input jack of the monitor to the stereo output jack of the computer thoroughly by using the voice cable or adjust the volume.
The sound is too weak.	Turn the volume up to MAX. If the sound is still too weak even after setting the volume on MAX, adjust the volume of the sound card or software program in your computer.
The sound is too sharp.	Turn the volume slightly down. If using an extensive microphone, adjust the volume while keeping a certain distance from the speaker.
The sound is too thick.	Re-adjust Bass and Treble.

The sound is distorted

Turn the volume down.
Place a magazine or a pad under the stand of your monitor.

● Check Before Using the MagicTune™

1. The Magic Tune™ (display adjustment) feature is not available in Game mode or Full Screen video mode.
2. When activated in a mode in which the four edges of the display are black (Game or DOS mode), the "Auto" feature of the LCD monitor may cause the screen to be displayed off-center.
3. Installing the MagicTune™ (display adjustment) software may cause a slight delay when starting the computer.

Check the following items if there is trouble with the monitor.

1. Check if the power cord and the cable are properly connected to the computer.
2. Check if the computer beeps more than 3 times when booting.
(If it does, request an after-service for the main board of the computer.)
3. If you installed a new video card or if you assembled the PC, check if the installed the adapter (video) driver and the monitor driver.
4. Check if the scanning ratio of the video screen is set at 75Hz.
(Do not exceed 60Hz when using the maximum resolution.)
5. If you have problems in installing the adapter (video) driver, boot the computer in Safe Mode, remove the Display Adapter at the "**Control Panel, System, Device Administrator**" and then reboot the computer to reinstall the adapter (video) driver.

Note: If problems repeatedly occur, [contact an authorized service center](#).

SyncMaster 170N/171N/172N/173N/191N/192N/193N/150N/151N/152N



Troubleshooting



Before calling for service, check the information in this section to see if you can remedy any problems yourself. If you do need assistance, please call the phone number on the warranty card, [the phone number on the Information section](#) or [contact your dealer](#).

[General](#) | [For Multimedia model](#) | [Check Before Using the MagicTune™](#)

- ▶ [Check List](#)
- ▶ [Q & A](#)
- ▶ [Self-Test Feature Check](#)

General

Symptom	Check List	Solutions
No images on the screen. I cannot turn on the monitor.	Is the power cord connected properly?	Check the power cord connection and supply.
	Can you see " No Connection, Check Signal Cable " on the screen?	Check the signal cable connection.
	If the power is on, reboot the computer to see the initial screen(the login screen), which can be seen.	If the initial screen (the login screen) appears, boot the computer in the applicable mode (the safe mode for Windows ME/XP/2000) and then change the frequency of the video card. (Refer to the Preset Display Modes) Note: If the initial screen (the login screen) does not appear, contact a service center or your dealer .
	Can you see " Video mode not supported " on the screen?	You can see this message when the signal from the video card exceeds the maximum resolution and frequency that the monitor can properly handle. Adjust the maximum resolution and frequency that the monitor can properly handle.
	There is no image on the screen. Is the power indicator on the monitor blinking at 1 second intervals?	The monitor is in PowerSaver mode. Press a key on the keyboard or move the mouse to activate the monitor and restore the image on the screen.
I cannot see the On Screen Display.	Have you locked the On Screen Display (OSD) Menu to prevent changes?	Unlock the OSD by pressing the MENU button for at least 5 seconds.
The screen shows strange colors or just black and white.	Is the screen displaying only one color as if looking at the screen through a cellophane paper?	Check the signal cable connection. Make sure the video card is fully inserted in it's slot.
	Have the screen colors become strange after running a program or due to a crash between applications?	Reboot the computer.
	Has the video card been set properly?	Set the video card by referring to the video card manual.
The screen suddenly has become	Have you changed the video card or the driver?	Adjust screen image position and size using the OSD.

unbalanced.	Have you adjusted the resolution or frequency to the monitor?	Adjust the resolution and frequency at the video card. (Refer to the Preset Display Modes).
	The screen can be unbalanced due to the cycle of the video card signals. Readjust Position by referring to the OSD.	
The screen is out of focus or OSD cannot be adjusted.	Have you adjusted the resolution or frequency on the monitor?	Adjust the resolution and frequency of the video card. (Refer to the Preset Display Modes).
LED is blinking but no images on the screen.	Is the frequency properly adjusted when checking the Display Timing on the menu?	Adjust the frequency properly by referring to the video card manual and the Preset Display Modes . (The maximum frequency per resolution may differ from product to product.)
There are only 16 colors shown on the screen. The screen colors have changed after changing the video card.	Have the Windows colors been set properly?	For Windows ME/XP/2000 : Set the colors properly at the Control Panel, Display, Settings .
	Has the video card been set properly?	Set the video card by referring to the video card manual.
There is a message that reads "Unrecognized monitor, Plug & Play (VESA DDC) monitor found".	Have you installed the monitor driver?	Install the monitor driver according to the Driver Installation Instructions .
	See the video card manual to see if the Plug & Play (VESA DDC) function can be supported.	Install the monitor driver according to the Driver Installation Instructions .

Check Before Using the MagicTune™

1. The Magic Tune™ (display adjustment) feature is not available in Game mode or Full Screen video mode.
2. When activated in a mode in which the four edges of the display are black (Game or DOS mode), the "Auto" feature of the LCD monitor may cause the screen to be displayed off-center.
3. Installing the MagicTune™ (display adjustment) software may cause a slight delay when starting the computer.

Check the following items if there is trouble with the monitor.

1. Check if the power cord and the cable are properly connected to the computer.
2. Check if the computer beeps more than 3 times when booting.
(If it does, request an after-service for the main board of the computer.)
3. If you installed a new video card or if you assembled the PC, check if the installed the adapter (video) driver and the monitor driver.
4. Check if the scanning ratio of the video screen is set at 75Hz or 85Hz.
(Do not exceed 60Hz when using the maximum resolution.)
5. If you have problems in installing the adapter (video) driver, boot the computer in Safe Mode, remove the Display Adapter at the "**Control Panel, System, Device Administrator**" and then reboot the computer to reinstall the adapter (video) driver.

Note: If problems repeatedly occur, [contact an authorized service center](#).



Troubleshooting

- ▶ Check List
- ▶ Q & A
- ▶ Self-Test Feature Check

Question	Answer
How can I change the frequency?	<p>Frequency can be changed by reconfiguring the video card.</p> <p>Note that video card support can vary, depending on the version of the driver used. (Refer to the computer or the video card manual for details.)</p>
How can I adjust the resolution?	<p>Windows ME/XP/2000 : Set the resolution at the Control Panel, Display, Settings.</p> <p>* Contact the video card manufacturer for details.</p>
How can I set the Power Saving function?	<p>Windows ME/XP/2000 : Set the function at BIOS-SETUP of the computer or the screen saver. (Refer to Windows/Computer Manual).</p>
How can I clean the outer case/LCD Panel?	<p>Disconnect the power cord and then clean the monitor with a soft cloth, using either a cleaning solution or plain water.</p> <p>Do not leave any remains of the detergent nor scratch the case. Do not allow any water to go inside the monitor.</p>



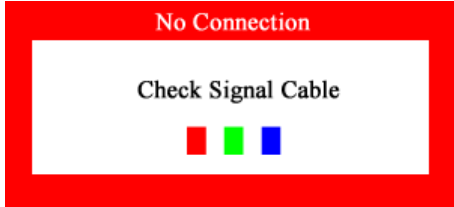
- Troubleshooting
- ▶ Check List
- ▶ Q & A
- ▶ Self-Test Feature Check

Your monitor provides a self test feature that allows you to check whether your monitor is functioning properly.

Self-Test Feature Check

1. Turn off both your computer and the monitor.
2. Unplug the video cable from the back of the computer.
3. Turn on the monitor.

If the monitor is functioning properly, you will see a box with a border and text inside as shown in the following illustration:
The three boxes inside the border are red, green and blue.



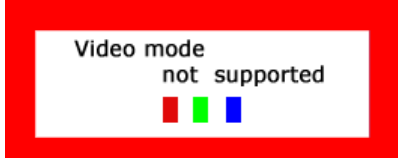
Failure of any of the boxes to appear indicates a problem with your monitor. This box also appears during normal operation if the video cable becomes disconnected or damaged.

4. Turn off your monitor and reconnect the video cable; then turn on both your computer and the monitor.

If your monitor screen remains blank after using the previous procedure, check your video controller and computer system; your monitor is functioning properly.

Warning Messages

If there is something wrong with the input signal, a message appears on the screen or the screen goes blank although the power indicator LED is still on. The message may indicate that the monitor is out of scan range or that you need to check the signal cable.



Environment

The location and the position of the monitor may influence the quality and other features of the monitor.

1. If there are any woofer speakers near the monitor, unplug and relocate the woofer to another room.
2. Remove all electronic devices such as radios, fans, clocks and telephones that are within 3

feet (one meter) of the monitor.

Useful Tips

- A monitor recreates visual signals received from the PC. Therefore, if there is trouble with the PC or the video card, this can cause the monitor to become blank, have poor coloring, noise, Video mode not supported, etc. In this case, first check the source of the problem, and then contact a service center or your dealer.
- **Judging the monitor's working condition**
If there is no image on the screen or a "Video mode not supported" message comes up, disconnect the cable from the computer while the monitor is still powered on.
 - If there is a message coming up on the screen or if the screen goes white, this means the monitor is in working condition.
 - In this case, check the computer for trouble.



Specifications

- ▶ **General**
- ▶ PowerSaver
- ▶ Preset Timing Modes

General	
Model Name	SyncMaster 173T
LCD Panel	
Size	17.0 inch diagonal
Display area	337.92 (H) x 270.336 (V)
Pixel Pitch	0.264 (H) x 0.264 (V)
Type	a-si TFT active matrix
Viewing Angle	170(H) / 170(V)
Synchronization	
Horizontal	30 ~ 81 kHz
Vertical	56 ~ 75 Hz
Display Color	
	16,194,277
Resolution	
Optimum resolution	1280 x 1024@60Hz
Maximum resolution	1280 x 1024@75Hz
Input Signal, Terminated	
	RGB Analog , DVI Compliant Digital RGB. Composite H/V Sync, SOG(option), 0.7Vp-p Positive at 75 ohms Separate H/V sync,TTL level positive or negative
Maximum Pixel Clock	
	140 MHz
Power Supply	
	AC 90 ~ 264 VAC rms, 60/50 Hz ± 3Hz
Signal Cable	
	15pin-to-15pin D-sub cable, detachable DVI-D to DVI-D connector, detachable
Power Consumption	
	42W (Maximum)
Dimensions (WxDxH) / Weight	
	368.2 x 177.0 x 394.3 mm / 5.0kg 368.2 x 58.8 x 310.1 mm(Without Stand)
VESA Mounting Interface	
	100mm x 100mm (for use with Specialty(Arm) Mounting hardware.)
Environmental considerations	
Operating	Temperature: 50°F ~ 104°F(10°C ~ 40°C) Humidity: 10% ~ 80%, non-condensing
Storage	Temperature: -4°F ~113°F (-20°C ~ 45°C) Humidity: 5% ~ 95%, non-condensing
Plug and Play Capability	
This monitor can be installed on any Plug & Play compatible system. Interaction of the monitor and computer systems will provide the best operating conditions and monitor settings. In most cases, monitor installation will proceed automatically, unless the user wishes to select alternate settings.	

Dot Acceptable

TFT LCD panel manufactured by using advanced semiconductor technology with precision of 99.999% above is used for this product. But the pixels of RED, GREEN, BLUE and WHITE color seem to be bright sometimes or some of black pixels could be seen. This is not from bad quality and you can use it without uneasiness.

- For example, the no. of TFT LCD pixels that is contained in this product are 3,932,160.

MagicTune™ (Display Adjustment) Feature

The MagicTune™ (display adjustment) feature is available only for Windows 98 SE or later versions.

Multimedia Speaker Stand

Dimension (Length x Height x Depth) / Monitor Body Weight / Carton Weight	220 x 253 x 208 (mm)
---	----------------------

Audio Input	Left/Right Stereo Jack , 0.5 Vrms
-------------	-----------------------------------

Audio Output	(L) 2.2W + (R) 2.2W / THD 10% at 8 ohm
--------------	--

Frequency Response	40 Hz ~ 20 KHz (-3dB)
--------------------	-----------------------

Headphones	Max Output 20mW (3.5 pi Jack)
------------	-------------------------------

Speaker	8ohm x 2 pcs, 70 x 32(mm)
---------	---------------------------

Note: Design and specifications are subject to change without prior notice.



- ▶ **General**
- ▶ PowerSaver
- ▶ Preset Timing Modes

General	
Model Name	SyncMaster 193T/191T plus
LCD Panel	
Size	19.0 inch diagonal
Display area	376.32 (H) x 301.056 (V)
Pixel Pitch	0.294 (H) x 0.294 (V)
Type	a-si TFT active matrix
Viewing Angle	170(H) / 170(V)
Synchronization	
Horizontal	30 ~ 81 kHz
Vertical	56 ~ 75 Hz
Display Color	
	16,194,277
Resolution	
Optimum resolution	1280 x 1024@60Hz
Maximum resolution	1280 x 1024@75Hz
Input Signal, Terminated	
	RGB Analog , DVI Compliant Digital RGB. Composite H/V Sync, SOG(option), 0.7Vp-p Positive at 75 ohms Separate H/V sync,TTL level positive or negative
Maximum Pixel Clock	
	140 MHz
Power Supply	
	AC 90 ~ 264 VAC rms, 60/50 Hz ± 3Hz
Signal Cable	
	15pin-to-15pin D-sub cable, detachable DVI-D to DVI-D connector, detachable
Power Consumption	
	42W (Maximum)
Dimensions (WxDxH) / Weight	
	416.3 x 207.0 x 411.7 mm / 6.15kg 416.3 x 57.9 x 342.0 mm(Without Stand)
VESA Mounting Interface	
	100mm x 100mm (for use with Specialty(Arm) Mounting hardware.)
Environmental considerations	
Operating	Temperature: 50°F ~ 104°F(10°C ~ 40°C) Humidity: 10% ~ 80%, non-condensing
Storage	Temperature: -4°F ~113°F (-20°C ~ 45°C) Humidity: 5% ~ 95%, non-condensing
Plug and Play Capability	
This monitor can be installed on any Plug & Play compatible system. Interaction of the monitor and computer systems will provide the best operating conditions and monitor settings. In most cases, monitor installation will proceed automatically, unless the user wishes to select alternate settings.	

Dot Acceptable

TFT LCD panel manufactured by using advanced semiconductor technology with precision of 99.999% above is used for this product. But the pixels of RED, GREEN, BLUE and WHITE color seem to be bright sometimes or some of black pixels could be seen. This is not from bad quality and you can use it without uneasiness.

- For example, the no. of TFT LCD pixels that is contained in this product are 3,932,160.

MagicTune™ (Display Adjustment) Feature

The MagicTune™ (display adjustment) feature is available only for Windows 98 SE or later versions.

Multimedia Speaker Stand

Dimension (Length x Height x Depth) / Monitor Body Weight / Carton Weight	220 x 253 x 208 (mm)
Audio Input	Left/Right Stereo Jack , 0.5 Vrms
Audio Output	(L) 2.2W + (R) 2.2W / THD 10% at 8 ohm
Frequency Response	40 Hz ~ 20 KHz (-3dB)
Headphones	Max Output 20mW (3.5 pi Jack)
Speaker	8ohm x 2 pcs, 70 x 32(mm)

Note: Design and specifications are subject to change without prior notice.



- ▶ **General**
- ▶ PowerSaver
- ▶ Preset Timing Modes

General	
Model Name	SyncMaster 170N/171N/172N/173N
LCD Panel	
Size	17.0 inch diagonal
Display area	337.92 (H) x 270.336 (V)
Pixel Pitch	0.264 (H) x 0.264 (V)
Type	a-si TFT active matrix
Viewing Angle	170(H) / 170(V)
Synchronization	
Horizontal	30 ~ 81 kHz
Vertical	56 ~ 75 Hz
Display Color	
	16,194,277
Resolution	
Optimum resolution	1280 x 1024@60Hz
Maximum resolution	1280 x 1024@75Hz
Input Signal, Terminated	
	RGB Analog 0.7 Vpp positive at 75 ohms Separate H/V sync, Composite H/V sync, SOG(option) TTL level positive or negative
Maximum Pixel Clock	
	140 MHz
Power Supply	
	AC 90 ~ 264 VAC rms, 60/50 Hz ± 3Hz
Signal Cable	
	15pin-to-15pin D-sub cable, detachable
Power Consumption	
	42W (Maximum)
Dimensions (WxDxH) / Weight	
	368.2 x 177.0 x 394.3 mm / 4.7kg 368.2 x 58.8 x 310.1 mm (Without Stand)
VESA Mounting Interface	
	100mm x 100mm (for use with Specialty(Arm) Mounting hardware.)
Environmental considerations	
Operating	Temperature: 50°F ~ 104°F(10°C ~ 40°C) Humidity: 10% ~ 80%, non-condensing
Storage	Temperature: -4°F ~113°F (-20°C ~ 45°C) Humidity: 5% ~ 95%, non-condensing
Plug and Play Capability	
This monitor can be installed on any Plug & Play compatible system. Interaction of the monitor and computer systems will provide the best operating conditions and monitor settings. In most cases, monitor installation will proceed automatically, unless the user wishes to select alternate settings.	

Dot Acceptable

TFT LCD panel manufactured by using advanced semiconductor technology with precision of 99.999% above is used for this product. But the pixels of RED, GREEN, BLUE and WHITE color seem to be bright sometimes or some of black pixels could be seen. This is not from bad quality and you can use it without uneasiness.

- For example, the no. of TFT LCD pixels that is contained in this product are 3,932,160.

MagicTune™ (Display Adjustment) Feature

The MagicTune™ (display adjustment) feature is available only for Windows 98 SE or later versions.

Multimedia Speaker Stand

Dimension (Length x Height x Depth) / Monitor Body Weight / Carton Weight	220 x 253 x 208 (mm)
---	----------------------

Audio Input	Left/Right Stereo Jack , 0.5 Vrms
-------------	-----------------------------------

Audio Output	(L) 2.2W + (R) 2.2W / THD 10% at 8 ohm
--------------	--

Frequency Response	40 Hz ~ 20 KHz (-3dB)
--------------------	-----------------------

Headphones	Max Output 20mW (3.5 pi Jack)
------------	-------------------------------

Speaker	8ohm x 2 pcs, 70 x 32(mm)
---------	---------------------------

Note: Design and specifications are subject to change without prior notice.



Specifications

- ▶ **General**
- ▶ PowerSaver
- ▶ Preset Timing Modes

General	
Model Name	SyncMaster 191N/192N/193N
LCD Panel	
Size	19.0 inch diagonal
Display area	376.32 (H) x 301.056 (V)
Pixel Pitch	0.294 (H) x 0.294 (V)
Type	a-si TFT active matrix
Viewing Angle	170(H) / 170(V)
Synchronization	
Horizontal	30 ~ 81 kHz
Vertical	56 ~ 75 Hz
Display Color	
	16,194,277
Resolution	
Optimum resolution	1280 x 1024@60Hz
Maximum resolution	1280 x 1024@75Hz
Input Signal, Terminated	
	RGB Analog 0.7 Vpp positive at 75 ohms Separate H/V sync, Composite H/V sync, TTL level positive or negative
Maximum Pixel Clock	
	135 MHz
Power Supply	
	AC 90 ~ 264 VAC rms, 60/50 Hz ± 3Hz
Signal Cable	
	15pin-to-15pin D-sub cable, detachable
Power Consumption	
	45W (Maximum)
Dimensions (WxDxH) / Weight	
	416.3 x 207.0 x 411.7 mm / 5.95kg 416.3 x 57.9 x 342.0 mm (Without Stand)
VESA Mounting Interface	
	100mm x 100mm (for use with Specialty(Arm) Mounting hardware.)
Environmental considerations	
Operating	Temperature: 50°F ~ 104°F(10°C ~ 40°C) Humidity: 10% ~ 80%, non-condensing
Storage	Temperature: -4°F ~113°F (-20°C ~ 45°C) Humidity: 5% ~ 95%, non-condensing
Plug and Play Capability	
	This monitor can be installed on any Plug & Play compatible system. Interaction of the monitor and computer systems will provide the best operating conditions and monitor settings. In most cases, monitor installation will proceed automatically, unless the user wishes to select alternate settings.

Dot Acceptable

TFT LCD panel manufactured by using advanced semiconductor technology with precision of 99.999% above is used for this product. But the pixels of RED, GREEN, BLUE and WHITE color seem to be bright sometimes or some of black pixels could be seen. This is not from bad quality and you can use it without uneasiness.

- For example, the no. of TFT LCD pixels that is contained in this product are 3,932,160.

MagicTune™ (Display Adjustment) Feature

The MagicTune™ (display adjustment) feature is available only for Windows 98 SE or later versions.

Multimedia Speaker Stand

Dimension (Length x Height x Depth) / Monitor Body Weight / Carton Weight	220 x 253 x 208 (mm)
---	----------------------

Audio Input	Left/Right Stereo Jack , 0.5 Vrms
-------------	-----------------------------------

Audio Output	(L) 2.2W + (R) 2.2W / THD 10% at 8 ohm
--------------	--

Frequency Response	40 Hz ~ 20 KHz (-3dB)
--------------------	-----------------------

Headphones	Max Output 20mW (3.5 pi Jack)
------------	-------------------------------

Speaker	8ohm x 2 pcs, 70 x 32(mm)
---------	---------------------------

Note: Design and specifications are subject to change without prior notice.



Specifications

- ▶ **General**
- ▶ PowerSaver
- ▶ Preset Timing Modes

General

Model Name	SyncMaster 153T
------------	-----------------

LCD Panel

Size	15.0 inch diagonal
Display area	304.1 (H) x 228.1 (V)
Pixel Pitch	0.297 (H) x 0.297 (V)
Type	a-si TFT active matrix
Viewing Angle	140(H) / 115(V)

Synchronization

Horizontal	30 ~ 61 kHz
Vertical	56 ~ 75 Hz

Display Color

16,194,277

Resolution

Optimum resolution	1024 x 768@60Hz
Maximum resolution	1024 x 768@75Hz

Input Signal, Terminated

RGB Analog , DVI Compliant Digital RGB.
 Composite H/V Sync, 0.7Vp-p Positive at 75 ohms
 Separate H/V sync,TTL level positive or negative

Maximum Pixel Clock

80 MHz

Power Supply

AC 90 ~ 264 VAC rms, 60/50 Hz ± 3Hz

Signal Cable

15pin-to-15pin D-sub cable, detachable
 DVI-D to DVI-D connector, detachable

Power Consumption

Less than 30W

Dimensions (WxDxH) / Weight

339.8 x 152.0 x 342.5 mm / 3.65kg
 339.8 x 55.0 x 266.3 mm(Without Stand)

VESA Mounting Interface

75 mm x 75 mm (for use with Specialty(Arm) Mounting hardware.)

Environmental considerations

Operating	Temperature: 50°F ~ 104°F(10°C ~ 40°C) Humidity: 10% ~ 80%, non-condensing
Storage	Temperature: -4°F ~113°F (-20°C ~ 45°C) Humidity: 5% ~ 95%, non-condensing

Plug and Play Capability

This monitor can be installed on any Plug & Play compatible system. Interaction of the monitor and

computer systems will provide the best operating conditions and monitor settings. In most cases, monitor installation will proceed automatically, unless the user wishes to select alternate settings.

Dot Acceptable

TFT LCD panel manufactured by using advanced semiconductor technology with precision of 99.999% above is used for this product. But the pixels of RED, GREEN, BLUE and WHITE color seem to be bright sometimes or some of black pixels could be seen. This is not from bad quality and you can use it without uneasiness.

- For example, the no. of TFT LCD pixels that is contained in this product are 2,359,296.

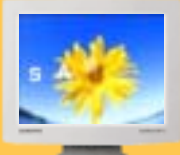
MagicTune™ (Display Adjustment) Feature

The MagicTune™ (display adjustment) feature is available only for Windows 98 SE or later versions.

Multimedia Speaker Stand

Dimension (Length x Height x Depth) / Monitor Body Weight / Carton Weight	220 x 253 x 208 (mm)
Audio Input	Left/Right Stereo Jack , 0.5 Vrms
Audio Output	(L) 2.2W + (R) 2.2W / THD 10% at 8 ohm
Frequency Response	40 Hz ~ 20 KHz (-3dB)
Headphones	Max Output 20mW (3.5 pi Jack)
Speaker	8ohm x 2 pcs, 70 x 32(mm)

Note: Design and specifications are subject to change without prior notice.



Specifications

- ▶ **General**
- ▶ PowerSaver
- ▶ Preset Timing Modes

General	
Model Name	SyncMaster 150N/151N/152N
LCD Panel	
Size	15.0 inch diagonal
Display area	304.1 (H) x 228.1 (V)
Pixel Pitch	0.297 (H) x 0.297 (V)
Type	a-si TFT active matrix
Viewing Angle	140(H) / 115(V)
Synchronization	
Horizontal	30 ~ 61 kHz
Vertical	56 ~ 75 Hz
Display Color	
16,194,277	
Resolution	
Optimum resolution	1024 x 768@60Hz
Maximum resolution	1024 x 768@75Hz
Input Signal, Terminated	
RGB Analog 0.7 Vpp positive at 75 ohms Separate H/V sync, Composite H/V sync, SOG(option) TTL level positive or negative	
Maximum Pixel Clock	
80 MHz	
Power Supply	
AC 90 ~ 264 VAC rms, 60/50 Hz ± 3Hz	
Signal Cable	
15pin-to-15pin D-sub cable, detachable	
Power Consumption	
Less than 30W	
Dimensions (WxDxH) / Weight	
339.8 x 152.0 x 342.5 mm / 3.2kg 339.8 x 55.0 x 266.3 mm (Without Stand)	
VESA Mounting Interface	
75 mm x 75 mm (for use with Specialty(Arm) Mounting hardware.)	
Environmental considerations	
Operating	Temperature: 50°F ~ 104°F(10°C ~ 40°C) Humidity: 10% ~ 80%, non-condensing
Storage	Temperature: -4°F ~113°F (-20°C ~ 45°C) Humidity: 5% ~ 95%, non-condensing
Plug and Play Capability	
This monitor can be installed on any Plug & Play compatible system. Interaction of the monitor and computer systems will provide the best operating conditions and monitor settings. In most cases,	

monitor installation will proceed automatically, unless the user wishes to select alternate settings.

Dot Acceptable

TFT LCD panel manufactured by using advanced semiconductor technology with precision of 99.999% above is used for this product. But the pixels of RED, GREEN, BLUE and WHITE color seem to be bright sometimes or some of black pixels could be seen. This is not from bad quality and you can use it without uneasiness.

- For example, the no. of TFT LCD pixels that is contained in this product are 2,359,296.

MagicTune™ (Display Adjustment) Feature

The MagicTune™ (display adjustment) feature is available only for Windows 98 SE or later versions.

Multimedia Speaker Stand

Dimension (Length x Height x Depth) / Monitor Body Weight / Carton Weight	220 x 253 x 208 (mm)
---	----------------------

Audio Input	Left/Right Stereo Jack , 0.5 Vrms
Audio Output	(L) 2.2W + (R) 2.2W / THD 10% at 8 ohm
Frequency Response	40 Hz ~ 20 KHz (-3dB)
Headphones	Max Output 20mW (3.5 pi Jack)
Speaker	8ohm x 2 pcs, 70 x 32(mm)

Note: Design and specifications are subject to change without prior notice.



Specifications

- ▶ **General**
- ▶ PowerSaver
- ▶ Preset Timing Modes

Main Page

General	
Model Name	SyncMaster 174T
LCD Panel	
Size	17.0 inch diagonal
Display area	337.92 (H) x 270.336 (V)
Pixel Pitch	0.264 (H) x 0.264 (V)
Type	a-si TFT active matrix
Synchronization	
Horizontal	30 ~ 81 kHz
Vertical	56 ~ 75 Hz
Display Color	
16,194,277 (Non TCO'03 model) 16,777,216 (TCO'03 applied model)	
Resolution	
Optimum resolution	1280 x 1024@60Hz
Maximum resolution	1280 x 1024@75Hz
Input Signal, Terminated	
RGB Analog , DVI Compliant Digital RGB. Composite H/V Sync,SOG(option), 0.7Vp-p Positive at 75 ohms Separate H/V sync,TTL level positive or negative	
Maximum Pixel Clock	
140 MHz	
Power Supply	
AC 90 ~ 264 VAC rms, 60/50 Hz ± 3Hz	
Signal Cable	
15pin-to-15pin D-sub cable, detachable DVI-D to DVI-D connector, detachable	
Power Consumption	
Less than 42W	
Dimensions (WxDxH) / Weight	
368.2 x 177.0 x 394.3 mm / 5.0kg 368.2 x 58.8 x 310.1 mm(Without Stand)	
VESA Mounting Interface	
100mm x 100mm (for use with Specialty(Arm) Mounting hardware.)	
Environmental considerations	
Operating	Temperature: 50°F ~ 104°F(10°C ~ 40°C) Humidity: 10% ~ 80%, non-condensing
Storage	Temperature: -4°F ~113°F (-20°C ~ 45°C) Humidity: 5% ~ 95%, non-condensing

Plug and Play Capability

This monitor can be installed on any Plug & Play compatible system. Interaction of the monitor and computer systems will provide the best operating conditions and monitor settings. In most cases, monitor installation will proceed automatically, unless the user wishes to select alternate settings.

Dot Acceptable

TFT LCD panel manufactured by using advanced semiconductor technology with precision of 99.999% above is used for this product. But the pixels of RED, GREEN, BLUE and WHITE color seem to be bright sometimes or some of black pixels could be seen. This is not from bad quality and you can use it without uneasiness.

For example, the no. of TFT LCD pixels that is contained in this product are 3,932,160.

MagicTune™ (Display Adjustment) Feature

The MagicTune™ (display adjustment) feature is available only for Windows 98 SE or later versions.

Multimedia Speaker Stand

Dimension (Length x Height x Depth) / Monitor Body Weight / Carton Weight	220 x 253 x 208 (mm)
Audio Input	Left/Right Stereo Jack , 0.5 Vrms
Audio Output	(L) 2.2W + (R) 2.2W / THD 10% at 8 ohm
Frequency Response	40 Hz ~ 20 KHz (-3dB)
Headphones	Max Output 20mW (3.5 pi Jack)
Speaker	8ohm x 2 pcs, 70 x 32(mm)

Note: Design and specifications are subject to change without prior notice.



- ▶ General
- ▶ **PowerSaver**
- ▶ Preset Timing Modes

This monitor has a built-in power management system called PowerSaver. This system saves energy by switching your monitor into a low-power mode when it has not been used for a certain amount of time. The monitor automatically returns to normal operation when you move the computer's mouse or press a key on the keyboard. For energy conservation, turn your monitor OFF when it is not needed, or when leaving it unattended for long periods. The PowerSaver system operates with a VESA DPMS compliant video card installed in your computer. Use a software utility installed on your computer to set up this feature.

SyncMaster 170N/171N/172N/173N/173T/193T/191T plus/174T

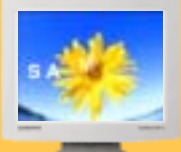
State	Normal Operation	Power saving mode EPA/ENERGY 2000	Power off (120Vac)
Power Indicator	Green	Green, Blinking	(Power button) Black
Power Consumption	Less than 42W	Less than 2W	Less than 1W

SyncMaster 191N/192N/193N

State	Normal Operation	Power saving mode EPA/ENERGY 2000	Power off (120Vac)
Power Indicator	Green	Green, Blinking	(Power button) Black
Power Consumption	Less than 45W	Less than 2W	Less than 1W



This monitor is EPA ENERGY STAR® compliant and ENERGY2000 compliant when used with a computer equipped with VESA DPMS functionality. As an ENERGY STAR® Partner, SAMSUNG has determined that this product meets the ENERGY STAR® guidelines for energy efficiency.



Specifications

- ▶ General
- ▶ **PowerSaver**
- ▶ Preset Timing Modes

SyncMaster 150N/151N/152N/153T

This monitor has a built-in power management system called PowerSaver. This system saves energy by switching your monitor into a low-power mode when it has not been used for a certain amount of time. The monitor automatically returns to normal operation when you move the computer's mouse or press a key on the keyboard. For energy conservation, turn your monitor OFF when it is not needed, or when leaving it unattended for long periods. The PowerSaver system operates with a VESA DPMS compliant video card installed in your computer. Use a software utility installed on your computer to set up this feature.

State	Normal Operation	Power saving mode EPA/ENERGY 2000	Power off (120Vac)
Power Indicator	Green	Green, Blinking	(Power button) Black
Power Consumption	Less than 30W	Less than 2W	Less than 1W



This monitor is EPA ENERGY STAR[®] compliant and ENERGY2000 compliant when used with a computer equipped with VESA DPMS functionality. As an ENERGY STAR[®] Partner, SAMSUNG has determined that this product meets the ENERGY STAR[®] guidelines for energy efficiency.

SyncMaster 173T/193T/170N/171N/172N/173N/191N/192N/193N/191T plus/174T



- ▶ General
- ▶ PowerSaver
- ▶ **Preset Timing Modes**

If the signal transferred from the computer is the same as the following Preset Timing Modes, the screen will be adjusted automatically. However, if the signal differs, the screen may go blank while the power LED is on. Refer to the video card manual and adjust the screen as follows.

Table 1. Preset Timing Modes

Display Mode	Horizontal Frequency (kHz)	Vertical Frequency (Hz)	Pixel Clock (MHz)	Sync Polarity (H/V)
IBM, 640 x 350	31.469	70.086	25.175	+/-
IBM, 640 x 480	31.469	59.940	25.175	-/-
IBM, 720 x 400	31.469	70.087	28.322	-/+
MAC, 640 x 480	35.000	66.667	30.240	-/-
MAC, 832 x 624	49.726	74.551	57.284	-/-
VESA, 640 x 480	37.500	75.000	31.500	-/-
VESA, 640 x 480	37.861	72.809	31.500	-/-
VESA, 800 x 600	35.156	56.250	36.000	+,-/+,-
VESA, 800 x 600	37.879	60.317	40.000	+/+
VESA, 800 x 600	46.875	75.000	49.500	+/+
VESA, 800 x 600	48.077	72.188	50.000	+/+
VESA, 1024 x 768	48.363	60.004	65.000	-/-
VESA, 1024 x 768	56.476	70.069	75.000	-/-
VESA, 1024 x 768	60.023	75.029	78.750	+/+
VESA, 1280 x 1024	63.981	60.020	108.00	+/+
VESA, 1280 x 1024	79.976	75.025	135.00	+/+
SUN, 1280 x 1024	81.129	76.106	135.00	-/-



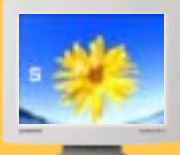
Horizontal Frequency

The time to scan one line connecting the right edge to the left edge of the screen horizontally is called Horizontal Cycle and the inverse number of the Horizontal Cycle is called Horizontal Frequency. Unit: kHz

Vertical Frequency

Like a fluorescent lamp, the screen has to repeat the same image many times per second to display an image to the user. The frequency of this repetition is called Vertical Frequency or Refresh Rate. Unit: Hz

SyncMaster 153T/150N/151N/152N



Specifications

- ▶ General
- ▶ PowerSaver
- ▶ **Preset Timing Modes**

English > Main > Specification > Preset Timing Modes

If the signal transferred from the computer is the same as the following Preset Timing Modes, the screen will be adjusted automatically. However, if the signal differs, the screen may go blank while the power LED is on. Refer to the video card manual and adjust the screen as follows.

Table 1. Preset Timing Modes

Display Mode	Horizontal Frequency (kHz)	Vertical Frequency (Hz)	Pixel Clock (MHz)	Sync Polarity (H/V)
MAC, 640 x 480	35.000	66.667	30.240	-/-
MAC, 832 x 624	49.726	74.551	57.284	-/-
IBM, 640 x 350	31.469	70.086	25.175	+/-
IBM, 640 x 480	31.469	59.940	25.175	-/-
IBM, 720 x 400	31.469	70.087	28.322	-/+
VESA, 640 x 480	37.500	75.000	31.500	-/-
VESA, 640 x 480	37.861	72.809	31.500	-/-
VESA, 800 x 600	35.156	56.250	36.000	+,-/+,-
VESA, 800 x 600	37.879	60.317	40.000	+/+
VESA, 800 x 600	46.875	75.000	49.500	+/+
VESA, 800 x 600	48.077	72.188	50.000	+/+
VESA, 1024 x 768	48.363	60.004	65.000	-/-
VESA, 1024 x 768	56.476	70.069	75.000	-/-
VESA, 1024 x 768	60.023	75.029	78.750	+/+



Horizontal Frequency

The time to scan one line connecting the right edge to the left edge of the screen horizontally is called Horizontal Cycle and the inverse number of the Horizontal Cycle is called Horizontal Frequency. Unit: kHz

Vertical Frequency

Like a fluorescent lamp, the screen has to repeat the same image many times per second to display an image to the user. The frequency of this repetition is called Vertical Frequency or Refresh Rate. Unit: Hz



Information

▶ **Service**

▶ Terms

▶ Regulatory

▶ Natural Color

▶ For Better Display

▶ Authority

- **U.S.A. :**
Samsung Computer Products Customer Service
400 Valley Road, Suite 201, Mt. Arlington, NJ 07856
Tel. : (973)601-6000, 1-800-SAMSUNG (1-800-726-7864)
Fax. : (973)601-6001
<http://www.samsungusa.com/monitor>
- **BRAZIL :**
Samsung Eletronica da Amazonia Ltda.
R. Prof. Manoelito de Ornellas, 303, Terro B
Chacara Sto. Antonio, CEP : 04719-040
Sao Paulo, SP
SAC : 0800 124 421
<http://www.samsung.com.br/>
- **CANADA :**
Samsung Electronics Canada Inc.
7037 Financial Drive
Mississauga, Ontario L5N 6R3
Tel. : 1-800-SAMSUNG (1-800-726-7864)
Fax. : (905) 542-1199
<http://www.samsung.ca/>
- **COLOMBIA :**
Samsung Electronics Colombia
Cra 9 No 99A-02 Of. 106
Bogota, Colombia
Tel.: 9-800-112-112
Fax: (571) 618 - 2068
<http://www.samsung-latin.com/>
e-mail : soporte@samsung-latin.com
- **PANAMA :**
Samsung Electronics Latinoamerica(Z.L.) S.A.
Calle 50 Edificio Plaza Credicorp, Planta Baja
Panama
Tel. : (507) 210-1122, 210-1133
Tel : 800-3278(FAST)
<http://www.samsung-latin.com/>
- **PERU**
Servicio Integral Samsung
Av.Argentina 1790 Lima1. Peru
Tel: 51-1-336-8686
Fax: 51-1-336-8551
<http://www.samsungperu.com/>
- **GERMANY :**
TELEPLAN Rhein-Main GmbH
Feldstr. 16
64331 Weiterstadt
T. 06151/957-1306
F. 06151/957-1732
* EURO 0,12/MIN.
<http://www.samsung.de/>
- **AUSTRALIA :**
Samsung Electronics Australia Pty Ltd.
Customer Response Centre
7 Parkview Drive, Homebush Bay NSW 2127
Tel : 1300 362 603
<http://www.samsung.com.au/>
- **ITALY :**
Samsung Electronics Italia S.p.a.
Via C. Donat Cattin, 5
20063 Cernusco s/Naviglio (MI)
Servizio Clienti: 199.153.153
<http://www.samsung-italia.com/>

- **ESPAÑA :**
 Samsung Electronics Comercial Iberica, S.A.
 Ciencies, 55-65 (Poligono Pedrosa) 08908
 Hospitalet de Llobregat (Barcelona)
 Tel. : (93) 261 67 00
 Fax. : (93) 261 67 50
<http://samsung.es/>
- **United Kingdom :**
 Samsung Electronics (UK) Ltd.
 Samsung House, 225 Hook Rise South
 Surbiton, Surrey KT6 7LD
 Tel. : (0208) 391 0168
 Fax. : (0208) 397 9949
 < European Service Center & National Service >
 Stafford Park 12 Telford, Shropshire, TF3 3BJ
 Tel. : (0870) 242 0303
 Fax. : (01952) 292 033
<http://samsungservice.co.uk/>
- **THAILAND :**
 HAI SAMSUNG SERVICE CENTER
 MPA COMPLEX BUILDING, 1st-2nd Floor
 175 SOI SUEKSA VIDHAYA SATHON SOI 12
 SILOM ROAD ,SILOM,BANGRAK
 BANGKOK 10500
 TEL : 0-2635-2567
 FAX : 0-2635-2556
- **SOUTH AFRICA :**
 Samsung Electronics, 5 Libertas Road, Somerset Office Park,
 Bryanston Ext 16. Po Box 70006, Bryanston, 2021, South Africa
 Tel : 0027-11-549-1621
 Fax : 0027-11-549-1629
<http://www.samsung.co.za/>
- **UKRAINE :**
 SAMSUNG ELECTRONICS REPRESENTATIVE OFFICE IN UKRAINE
 4 Glybochitska str.
 Kiev, Ukraine
 Tel. 8-044-4906878
 Fax 8-044-4906887
 Toll-free 8-800-502-0000
- **SWEDEN/DENMARK/NORWAY/FINLAND :**
 Samsung Electronics AB
 Box 713
 S-194 27 UPPLANDS VÄSBY
 SVERIGE
 Besöksadress : Johanneslundsvägen 4
 Samsung support Sverige: 020-46 46 46
 Samsung support Danmark : 8088-4646
 Samsung support Norge: 8001-1800
 Samsung support Finland: 0800-118001
 Tel +46 8 590 966 00
 Fax +46 8 590 966 50
<http://www.samsung.se/>
- **HUNGARY :**
 Samsung Electronics Magyar Rt.
 1039, Budapest, Lehel u. 15-17.
 Tel: 36 1 453 1100
 Fax: 36 1 453 1101
<http://www.samsung.hu/>
- **FRANCE :**
 SAMSUNG ELECTRONICS FRANCE Service
 Paris Nord 2
 66 rue des Vanesses
 BP 50116 Villepinte
 95950 Roissy CDG Cedex
 Tel : 08 25 08 65 65
 Fax : 01 48 63 06 38
<http://www.samsungservices.com/>
- **PORTUGAL :**
 SAMSUNG ELECTRONICA PORTUGUESA S.A.
 Rua Mário Dioniso, Nº2 - 1º Drt. 2795-140 LINDA-A-VELHA
 Tel. 214 148 114/100 Fax. 214 148 133/128

Free Line 800 220 120

<http://www.samsung.pt/>

● **NETHERLANDS/BELGIUM/LUXEMBOURG :**

Samsung Electronics Benelux B. V.

Fleminglaan 12 2289 CP Rijiswijk, NEDERLANDS

Service and informatielijn ;

Belgium :0800-95214, <http://www.samsung.be/>

Netherlands : 0800-2295214, <http://www.samsung.nl/>

● **CHILE :**

SONDA S.A.

Teatinos 550, Santiago Centro, Santiago, Chile

Fono: 56-2-5605000 Fax: 56-2-5605353

56-2-800200211

<http://www.sonda.com/>

<http://www.samsung.cl/>

● **MEXICO :**

Samsung Electronics Mexico S.A. de C.V.

Saturno 44 Col. Nueva Industrial Vallejo

Del. Gustavo A. Madero C.P. 07700

Mexico D.F.

Tel. 01 57 47 51 00

Fax. 01 57 47 52 02

RFC: SEM950215S98

<http://www.samsung.com.mx/>

IMPORTADO POR: SAMSUNG ELECTRONICS MEXICO S.A. DE C.V.
SATURNO 44 COL. NVA. INDUSTRIAL VALLEJO
DEL. GUSTAVO A. MADERO C.P. 07700
MEXICO D.F. TEL. 5747-5100
RFC: SEM950215S98

EXPORTADO POR: SAMSUNG ELECTRONICS CO.,LTD.
JOONG-ANG DAILY NEWS BLDG.
7 SOON-WHA-DONG CHUNG-KU,
C.P.O BOX 2775, 1144 SEOUL, KOREA



Information

- ▶ Service
- ▶ **Terms**
- ▶ Regulatory
- ▶ Natural Color
- ▶ For Better Display
- ▶ Authority

● **Dot Pitch**

The image on a monitor is composed of red, green and blue dots. The closer the dots, the higher the resolution. The distance between two dots of the same color is called the 'Dot Pitch'. Unit: mm

● **Vertical Frequency**

The screen must be redrawn several times per second in order to create and display an image for the user. The frequency of this repetition per second is called Vertical Frequency or Refresh Rate. Unit: Hz

Example: If the same light repeats itself 60 times per second, this is regarded as 60 Hz. In this case, flickering of the screen can be detected. To avoid this problem, there is a Flicker-free Mode using a vertical frequency over 70 Hz.

● **Horizontal Frequency**

The time to scan one line connecting the right edge to the left edge of the screen horizontally is called Horizontal Cycle. The inverse number of the Horizontal Cycle is called Horizontal Frequency. Unit: kHz

● **Interlace and Non-Interlace Methods**

Showing the horizontal lines of the screen from the top to the bottom in order is called the Non-Interlace method while showing odd lines and then even lines in turn is called the Interlace method. The Non-Interlace method is used for the majority of monitors to ensure a clear image. The Interlace method is the same as that used in TVs.

● **Plug & Play**

This is a function that provides the best quality screen for the user by allowing the computer and the monitor to exchange information automatically. This monitor follows the international standard VESA DDC for the Plug & Play function.

● **Resolution**

The number of horizontal and vertical dots used to compose the screen image is called 'resolution'. This number shows the accuracy of the display. High resolution is good for performing multiple tasks as more image information can be shown on the screen.

Example: If the resolution is 1280 X 1280, this means the screen is composed of 1280 horizontal dots (horizontal resolution) and 1280 vertical lines (vertical resolution).



- ▶ Service
- ▶ Terms
- ▶ **Regulatory**
- ▶ Natural Color
- ▶ For Better Display
- ▶ Authority

■ FCC Information

User Instructions

The Federal Communications Commission Radio Frequency Interference Statement includes the following warning:

Note: This equipment has been tested and found to comply with the limits for a Class B digital device, pursuant to Part 15 of the FCC Rules. These limits are designed to provide reasonable protection against harmful interference in a residential installation. This equipment generates, uses, and can radiate radio frequency energy and, if not installed and used in accordance with the instructions, may cause harmful interference to radio communications. However, there is no guarantee that interference will not occur in a particular installation. If this equipment does cause harmful interference to radio or television receptions, which can be determined by turning the equipment off and on, the user is encouraged to try to correct the interference by one or more of the following measures:

- Reorient or relocate the receiving antenna.
- Increase the separation between the equipment and receiver.
- Connect the equipment into an outlet on a circuit different from that to which the receiver is connected.
- Consult the dealer or an experienced radio/TV technician for help.

User Information

Changes or modifications not expressly approved by the party responsible for compliance could void the user's authority to operate the equipment. If necessary, consult your dealer or an experienced radio/television technician for additional suggestions. You may find the booklet called How to Identify and Resolve Radio/TV Interference Problems helpful. This booklet was prepared by the Federal Communications Commission. It is available from the U.S. Government Printing Office, Washington, DC 20402, Stock Number 004-000-00345-4.

The party responsible for product compliance:
SAMSUNG ELECTRONICS CO., LTD
America QA Lab of Samsung
3351 Michelson Drive,
Suite #290, Irvine, CA92612 USA
Tel) 949-975-7310
Fax) 949-922-8301

Warning

User must use shielded signal interface cables to maintain FCC compliance for the product.

Provided with this monitor is a detachable power supply cord with IEC320 style terminations. It may be suitable for connection to any UL Listed personal computer with similar configuration. Before making the connection, make sure the voltage rating of the computer convenience outlet is the same as the monitor and that the ampere rating of the computer convenience outlet is equal to or exceeds the monitor voltage rating.

For 120 Volt applications, use only UL Listed detachable power cord with NEMA configuration 5-15P type (parallel blades) plug cap. For 240 Volt applications use only UL Listed Detachable power supply cord with NEMA configuration 6-15P type (tandem blades) plug cap.

■ IC Compliance Notice

This Class B digital apparatus meets all requirements of the Canadian Interference-Causing Equipment Regulations of ICES-003.

Cet appareil Numérique de classe B respecte toutes les exigences du Règlement NMB-03 sur les équipements produisant des interférences au Canada.

■ **MPR II Compliance**

This monitor complies with SWEDAC(MPR II) recommendations for reduced electric and magnetic fields.

■ **European Notice(Europe Only)**

Products with the CE marking comply with the EMC Directive(89/336/EEC), (92/31/EEC), (93/68/EEC) and the Low Voltage Directive (73/23/EEC) issued by the Commission of the European Community.

Compliance with these directives implies conformity to the following European Norms:

- EN55022:1998+A1:2000 - Radio Frequency Interference
- EN55024:1998 - Electromagnetic Immunity of Information Technology Equipment
- EN61000-3-2:1995+A1/A2:1998 - Power Line Harmonics
- EN61000-3-3:1995 - Voltage Fluctuations

■ **PCT Notice**



■ **VCCI**

This is a Class B product based on the standard of the Voluntary Control Council for Interference by Information Technology Equipment (VCCI). If this is used near a radio or television receiver in a domestic environment, it may cause radio interference. Install and use the equipment according to the instruction manual.

■ **TCO'95-Ecological requirements for personal computers (TCO'95 applied model only)**



AB general requirements

AB2 Written Eco-document accompanying the products

Congratulations! You have just purchased a TCO'95 approved and labelled product! Your choice has provided you with a product developed for professional use. Your purchase has also contributed to reducing the burden on the environment and to the further development of environmentally-adapted electronic products.

Why do we have environmentally-labelled monitors?

In many countries, environmental labelling has become an established method for encouraging the adaptation of goods and services to the environment. The main problem as far as monitors and other electronic equipment are concerned is that environmentally harmful substances are used both in the products and during their manufacture. Since it has not been possible so far for the majority of electronic equipment to be recycled in a satisfactory way, most of these potentially damaging substances sooner or later enter Nature.

There are also other characteristics of a monitor, such as energy consumption levels, that are important from both the working and natural environment viewpoints. Since all types of conventional electricity generation have a negative effect on the environment (acidic and climate-influencing emissions, radioactive waste, etc.) it is vital to conserve energy. Electronic equipment in offices consumes an enormous amount of energy, since it is often routinely left running continuously.

What does labelling involve?

This product meets the requirements for the TCO'95 scheme, which provides for international environmental labelling of monitors. The labelling scheme was developed as a joint effort by the TCO (The Swedish Confederation of Professional Employees), Naturskyddsforeningen (The Swedish Society for Nature Conservation) and NUTEK (The National Board for Industrial and Technical Development in Sweden).

The requirements cover a wide range of issues: environment, ergonomics, usability, emission of electrical and magnetic fields, energy consumption and electrical and fire safety.

The environmental demands concern among other things restrictions on the presence and use of heavy metals, brominated and chlorinated flame retardants, CFCs (freons), and chlorinated solvents. The product must be prepared for recycling and the manufacturer is obliged to have an environmental plan, which must be adhered to in each country where the company conducts its operations policy. The energy requirements include a demand that the monitor after a certain period of inactivity shall reduce its power consumption to a lower level, in one or more stages. The length of time to reactivate the monitor shall be reasonable for the user.

Labelled products must meet strict environmental demands, for example in respect of the reduction of electric and magnetic fields, along with physical and visual ergonomics and good usability.

TCO Development Unit 1996-11-29

On the page this folder you will find a brief summary of the environmental requirements met by this product.

The complete environmental criteria document may be ordered from:

TCO Development Unit

S-11494 Stockholm

Sweden

Fax: +46 8 782 92 07

E-mail (Internet): development@tco.se

Current information regarding TCO'95-approved and labelled products may also be obtained via the Internet, using the address:

<http://www.tco-info.com/>

TCO'95 is a co-operative project between (3 logos)

Environmental Requirements

Brominated flame retardants are present in printed circuit boards, cables, wires, casings and housings. In turn, they delay the spread of fire. Up to thirty percent of the plastic in a computer casing can consist of flame retardant substances. These are related to another group of environmental toxins, PCBs, which are suspected to give rise to similar harm, including reproductive damage in fish eating birds and mammals, due to the bioaccumulative processes. Flame retardants have been found in human blood and researchers fear that disturbances in foetus development may occur.

- TCO'95 demand requires that plastic components weighing more than 25 grams must not contain organically bound chlorine and bromine.

Lead

Lead can be found in picture tubes, display screens, solders and capacitors. Lead damages the nervous system and in higher doses, causes lead poisoning.

- TCO'95 requirement Permits the inclusion of lead since no replacement has yet been developed.

Cadmium

Cadmium is present in rechargeable batteries and in the colour generating layers of certain computer displays. Cadmium damages the nervous system and is toxic in high doses.

- TCO'95 requirement states that batteries may not contain more than 25 ppm (parts per million) of cadmium. The colour-generating layers of display screens must not contain any cadmium.

Mercury

Mercury is sometimes found in batteries, relays and switches. Mercury damages the nervous system and is toxic in high doses.

- TCO'95 requirement states that batteries may not contain more than 25 ppm (parts per million) of mercury. It also demands that no mercury is present in any of the electrical or electronics components concerned with the display unit.

CFCs (freons)

CFCs (freons) are sometimes used for washing printed circuit boards and in the manufacturing of expanded foam for packaging. CFCs break down ozone and thereby damage the ozone layer in the stratosphere, causing increased reception on Earth of ultraviolet light with consequent increased risks of skin cancer (malignant melanoma).

- The relevant TCO'95 requirement: Neither CFCs nor HCFCs may be used during the manufacturing of the product or its packaging.

TCO'99-Ecological requirements for personal computers (TCO'99 applied model only)



Congratulations!

You have just purchased a TCO'99 approved and labelled product! Your choice has provided you with a product developed for professional use. Your purchase has also contributed to reducing the burden on the environment and also to the further development of environmentally adapted electronics products.

This product meets the requirements for the TCO'99 scheme which provides for an international environmental and quality labelling of personal computers. The labelling scheme was developed as a joint effort by the TCO(The Swedish Confederation of Professional Employees), Svenska Naturskyddsforeningen(The Swedish Society for Nature Conservation), Statens Energimyndighet(The Swedish National Energy Administration) and SEMKO AB.

The requirements cover a wide range of issues: environment, ergonomics, usability, reduction of electric and magnetic fields, energy consumption and electrical safety.

Why do we have environmentally labelled computers?

In many countries, environmental labelling has become an established method for encouraging the adaptation of goods and services to the environment. The main problem, as far as computers and other electronics equipment are concerned, is that environmentally harmful substances are used both in the products and during their manufacture. Since it is not so far possible to satisfactorily recycle the majority of electronics equipment, most of these potentially damaging substances sooner or later enter nature.

There are also other characteristics of a computer, such as energy consumption levels, that are important from the viewpoints of both the work (internal) and natural (external) environments. Since all methods of electricity generation have a negative effect on the environment (e.g. acidic and climate-influencing emissions, radioactive waste), it is vital to save energy. Electronics equipment in offices is often left running continuously and thereby consumes a lot of energy.

What does labelling involve?

The environmental demands have been developed by Svenska Naturskyddsforeningen (The Swedish Society for Nature Conservation). These demands impose restrictions on the presence and use of heavy metals, brominated and chlorinated flame retardants, CFCs(freons)and chlorinated solvents, among other things. The product must be prepared for recycling and the manufacturer is obliged to have an environmental policy which must be adhered to in each country where the company implements its operational policy.

The energy requirements include a demand that the computer and/or display, after a certain period of inactivity, shall reduce its power consumption to a lower level in one or more stages. The length of time to reactivate the computer shall be reasonable for the user.

Below you will find a brief summary of the environmental requirements met by this product. The complete environmental criteria document may be ordered from:

TCO Development
SE-114 94 Stockholm, Sweden
Fax: +46 8 782 92 07
Email (Internet): development@tco.se

Current information regarding TCO'99 approved and labelled products may also be obtained via the Internet, using the address: <http://www.tco-info.com/>

Environmental requirements

Flame retardants

Flame retardants are present in printed circuit boards, cables, wires, casings and housings. Their purpose is to prevent, or at least to delay the spread of fire. Up to 30% of the plastic in a computer casing can consist of flame retardant substances. Most flame retardants contain bromine or chloride, and those flame retardants are chemically related to another group of environmental toxins, PCBs. Both the flame retardants containing bromine or chloride and the PCBs are suspected of giving rise to severe health effects, including reproductive damage in fish-eating birds and mammals, due to the bio-accumulative* processes. Flame retardants have been found in human blood and researchers fear that disturbances in foetus development may occur.

The relevant TCO'99 demand requires that plastic components weighing more than 25 grams must not contain flame retardants with organically bound bromine or chlorine. Flame retardants are allowed in the printed circuit boards since no substitutes are available.

Cadmium**

Cadmium is present in rechargeable batteries and in the colour-generating layers of certain computer displays. Cadmium damages the nervous system and is toxic in high doses. The relevant TCO'99 requirement states that batteries, the colour-generating layers of display screens and the electrical or electronics components must not contain any cadmium.

Mercury**

Mercury is sometimes found in batteries, relays and switches. It damages the nervous system and is toxic in high doses. The relevant TCO'99 requirement states that batteries may not contain any mercury. It also demands that mercury is not present in any of the electrical or electronics components associated with the labelled unit. There is however one exception. Mercury is, for the time being, permitted in the back light system of flat panel monitors as today there is no commercially available alternative. TCO aims on removing this exception when a Mercury free alternative is available.

CFCs (freons)

The relevant TCO'99 requirement states that neither CFCs nor HCFCs may be used during the manufacture and assembly of the product. CFCs (freons) are sometimes used for washing printed circuit boards. CFCs break down ozone and thereby damage the ozone layer in the stratosphere, causing increased reception on earth of ultraviolet light with e.g. increased risks of skin cancer (malignant melanoma) as a consequence.

Lead**

Lead can be found in picture tubes, display screens, solders and capacitors. Lead damages the nervous system and in higher doses, causes lead poisoning. The relevant TCO'99 requirement permits the inclusion of lead since no replacement has yet been developed.

TCO'03-Ecological requirements for personal computers (TCO'03 applied model only)



Congratulations!

The display you have just purchased carries the TCO'03 Displays label. This means that your display is designed, manufactured and tested according to some of the strictest quality and environmental requirements in the world. This makes for a high performance product, designed with the user in focus that also minimizes the impact on our natural environment.

Some of the features of the TCO'03 Display requirements:

Ergonomics

Good visual ergonomics and image quality in order to improve the working environment for the user and to reduce sight and strain problems. Important parameters are luminance, contrast, resolution, reflectance, colour rendition and image stability.

Energy

- Energy-saving mode after a certain time – beneficial both for the user and the environment
- Electrical safety

Emissions

- Electromagnetic fields
- Noise emissions

Ecology

- The product must be prepared for recycling and the manufacturer must have a certified environmental management system such as EMAS or ISO 14 000
- Restrictions on
 - chlorinated and brominated flame retardants and polymers
 - heavy metals such as cadmium, mercury and lead.

The requirements included in this label have been developed by TCO Development in cooperation with scientists, experts, users as well as manufacturers all over the world. Since the end of the 1980s TCO has been involved in influencing the development of IT equipment in a more user-friendly direction. Our labelling system started with displays in 1992 and is now requested by users and IT-manufacturers all over the world.

For more information, Please visit
www.tcodevelopment.com

Medical Requirement



Classifications:

In accordance with UL 2601-1/IEC 60601-1, the product is classified as Continuous duty Class I equipment, which is not protected against ingress of liquids. The product is not suitable for use in the presence of a flammable anaesthetic mixture with air or with oxygen or nitrous oxide.

EMC

This equipment has been tested and found to comply with the limits for medical devices to the IEC 601-1-2:1994. These limits are designed to provide reasonable protection against harmful interference in a typical medical installation. This equipment generates, uses and can radiate radio frequency energy and, if not installed and used in accordance with the instructions, may cause harmful interference to other devices in the vicinity. However, there is no guarantee that interference will not occur in a particular installation. If this equipment does cause harmful interference to other devices, which can be determined by turning the equipment off and on, the user is encouraged to try to correct the interference by one or more of the following measures:

- Reorient or relocate the receiving device.
- Increase the separation between the equipment.
- Connect the equipment into an outlet on a circuit different from that to which the other device(s) are connected.
- Consult the manufacturer or field service technician for help.

Video In / RS 232 / Video Out

Accessories equipment connected to the analog and digital interfaces must be certified to the respective IEC standards (i.e. IEC 950 for data processing equipment and IEC 601-1 for medical equipment.) Furthermore all configurations shall comply with the system standard IEC 601-1-1. Everybody who connects additional equipment to the signal input part or signal output part configures a medical system, and is therefore, responsible that the system complies with the requirements of the system standard IEC 601-1-1. If in doubt, consult the technical services department or your local representative.

Transport and Storage Limitations:

Temperature Range of -40°C to +70°C

Relative Humidity of 10 -95%, non-condensing

* Bio-accumulative is defined as substances which accumulate within living organisms.

** Lead, Cadmium and Mercury are heavy metals which are Bio-accumulative.



- Information
- ▶ Service
- ▶ Terms
- ▶ Regulatory
- ▶ **Natural Color**
- ▶ For Better Display
- ▶ Authority

● **Natural Color Software Program**



One of the recent problems in using a computer is that the color of the images printed out by a printer or other images scanned by a scanner or a digital camera are not the same as those shown on the monitor.
 The Natural Color S/W is the very solution for this problem. It is a color administration system developed by Samsung Electronics in association with Korea Electronics & Telecommunications Research Institute (ETRI). This system is available only for Samsung monitors and makes the color of the images on the monitor the same as the printed or scanned images.
 For more information, refer to Help (F1) in the software program.

How to install the Natural Color software

Insert the CD included with the Samsung monitor into the CD-ROM Drive. Then, the initial screen of the program installation will be executed. Click Natural Color on the initial screen to install the Natural Color software. To install the program manually, insert the CD included with the Samsung monitor into the CD-ROM Drive, click the [Start] button of Windows and then select [Execute].
 Enter D:\color\eng\setup.exe and then press the <Enter> key.
 (If the drive where the CD is inserted is not D:\, enter the applicable drive.)

How to delete the Natural Color software program

Select [Setting]/[Control Panel] on the [Start] menu and then double-click [Add/Delete a program].
 Select Natural Color from the list and then click the [Add/Delete] button.



Information

- ▶ Service
- ▶ Terms
- ▶ Regulatory
- ▶ Natural Color
- ▶ **For Better Display**
- ▶ Authority

● **For Better Display**

1. Adjust computer resolution and screen injection rate (refresh rate) in control panel of computer as described below to enjoy the best quality of picture. You can have an uneven quality of picture in the screen if the best quality of picture is not provided in TFT-LCD.
 - Resolution: 1280 x 1024
 - Vertical frequency (refresh rate): 60 Hz
2. TFT LCD panel manufactured by using advanced semiconductor technology with precision of 99.999% above is used for this product. But the pixels of RED, GREEN, BLUE and WHITE color seem to be bright sometimes or some of black pixels could be seen. This is not from bad quality and you can use it without uneasiness.
 - For example, the number of TFT LCD pixels that is contained in this product are 3,932,160.
3. When you clean the monitor and the panel outside, please apply the recommended small amount of cleaner by using soft and dry cloth and polish it. Let LCD area not to be forced but to be scrubbed out softly. If excessive force is applied, you can have a stain on it.
4. If you are not satisfied with the quality of picture, you can get better quality of picture by executing "auto adjustment function" in display screen that is appeared as window termination button is pressed. If there's still noise after automatic adjustment, use FINE/COARSE adjustment function.
5. If you view a fixed screen for an extended period of time, residual image or blurriness may appear.
Change the mode to energy save or set a screensaver to moving picture when you need to be away from the monitor for an extended period of time.



Information

- ▶ Service
- ▶ Terms
- ▶ Regulatory
- ▶ Natural Color
- ▶ For Better Display
- ▶ **Authority**

**Information in this document is subject to change without notice.
© 2003 Samsung Electronics Co., Ltd. All rights reserved.**

Reproduction in any manner whatsoever without the written permission of Samsung Electronics Co., Ltd. is strictly forbidden.

Samsung Electronics Co., Ltd. shall not be liable for errors contained herein or for incidental or consequential damages in connection with the furnishing, performance, or use of this material.

Samsung is the registered trademark of Samsung Electronics Co., Ltd.; *Microsoft, Windows* and *Windows NT* are registered trademarks of Microsoft Corporation; *VESA, DPMS* and *DDC* are registered trademarks of Video Electronics Standard Association; the *ENERGY STAR* name and logo are registered trademarks of the U.S. Environmental Protection Agency (EPA). As an ENERGY STAR Partner, Samsung Electronics Co., Ltd. has determined that this product meets the ENERGY STAR guidelines for energy efficiency. All other product names mentioned herein may be the trademarks or registered trademarks of their respective owners.